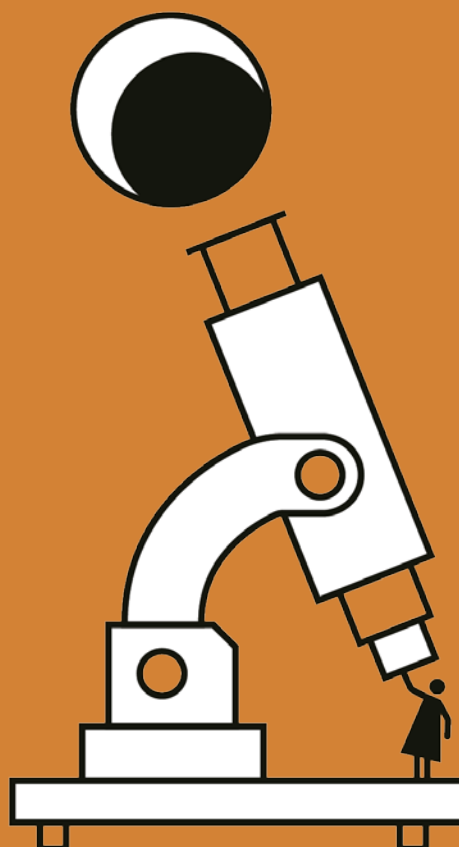
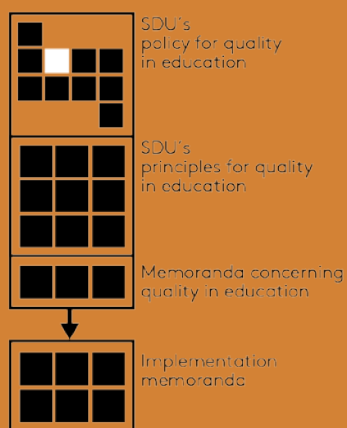


2. Sub-policy for Study Commencement



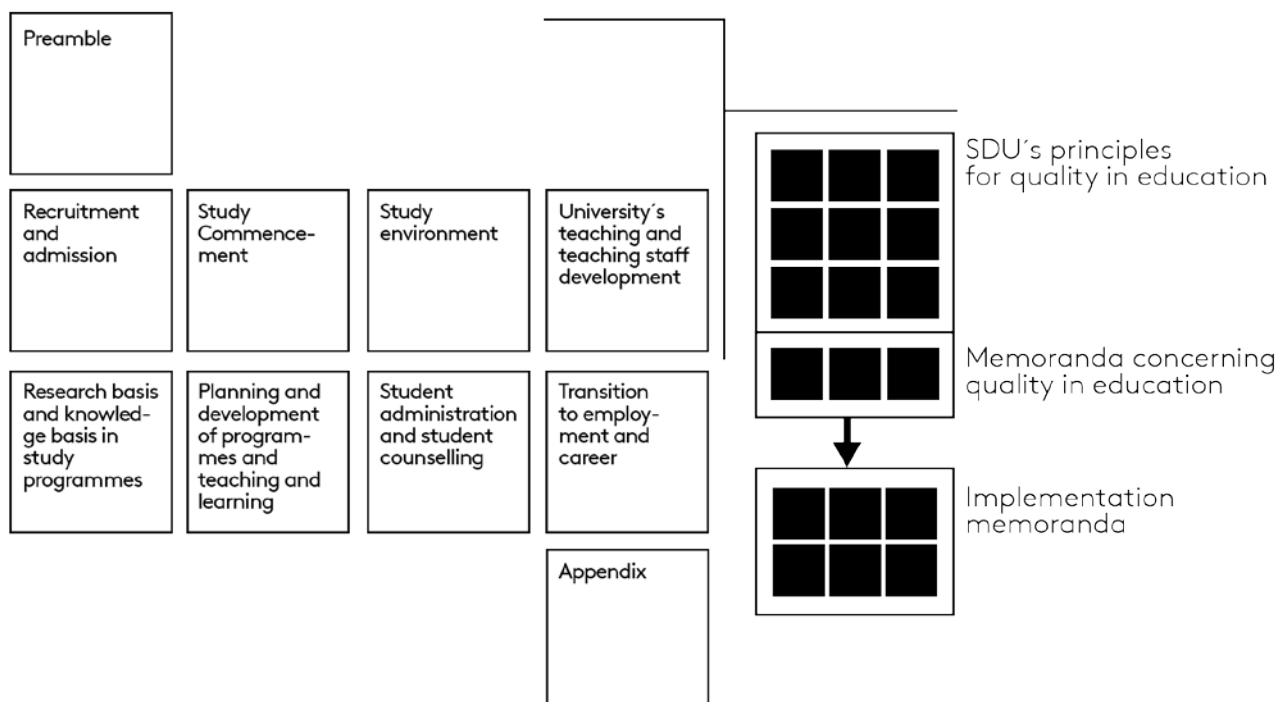
Colophon

Document status: Applicable
Approved as of: 13/06/2018
Approved by: The Executive Board
Applicable to: SDU
Website: www.sdu.dk/uddannelseskvalitet
File number: 18/5558

2. Sub-policy for Study Commencement

Preview over documents for SDU's Quality in Education

SDU's
policy for quality in education



2. Sub-policy for Study Commencement

Content

Purpose	3
Frameworks	3
Quality objectives	4
2.1 The new students receive relevant information about their programme in good time. In addition, the students are informed of where they can search for further information.	4
2.2 The university creates good conditions for early integration into the academic and social life as a university student.	4

Purpose

Study Commencement introduces the student to the programme, encourages appropriate working methods in and outside of the classroom and improves the foundation for successful completion of the programme.

Study Commencement promotes early integration into the academic life as a university student through both teaching and guidance. This acknowledges that the students arrive with different personal, academic, cultural and linguistic prerequisites. Study Commencement also supports the social integration of the student.

Frameworks

External

- [ESG 1.5: Teaching staff](#)
- [ESG 1.6: Learning resources and student support](#)
- [ESG 1.7: Information management](#)

Internally related documents

- [SDU Strategy](#)
- [SDU's principles for student and career guidance](#)
- Communication strategy
- [Underlying Principles of Activating Teaching and Active Learning](#)
- [Language policy](#)
- [SDU's principles for Study Commencement](#)
- [SDU's principles for internationalisation of education](#)

Quality objectives

2.1 The new students receive relevant information about their programme in good time. In addition, the students are informed of where they can search for further information.

Standard 2.1.1 The programme ensures that the new students receive the relevant information about the programme in good time.

Indikator 2.1.1.1 The new students declare in the Study Commencement survey that they are satisfied with the information provided about the programme.

Follow-up	Programme report
Responsible parties	Head of Studies

2.2 The university creates good conditions for early integration into the academic and social life as a university student.

Standard 2.2.1 The programme establishes frameworks for Study Commencement activities in order to support early integration in the best possible way.

Indikator 2.2.1.1 If the following key figures for the most recently calculated year are unsatisfactory, the programme must carry out a study of the causes hereto and clarify the relevant actions to be taken in the future on the basis of this.

- For Bachelor programmes: Drop-out rate for 1st year
- For Master's degree programmes: Drop-out rate for programme

Follow-up	Programme report
Responsible parties	Head of Studies

Standard 2.2.2 The programme supports the individual student's experience exchange and collaboration with other students, including students from other academic years, from the commencement of the programme.

Indikator 2.2.2.1 The programme continuously looks at how the students' experience exchange and collaboration with other students are best supported from the commencement of the programme.

Follow-up	Programme report
Responsible parties	Head of Studies

Indikator 2.2.2.2 As far as possible, the programme affiliates students from older academic years to facilitate the introductory course of the programme.

Follow-up	Programme report
Responsible parties	Head of Studies

Indikator 2.2.2.3 The new students declare in SDU's Study Commencement survey that they are satisfied with the academic and social introduction.

Follow-up	Programme report
Responsible parties	Head of Studies