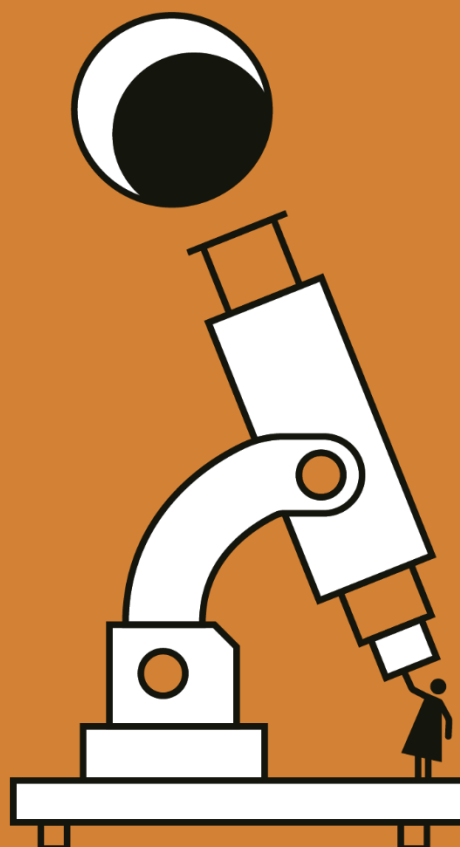
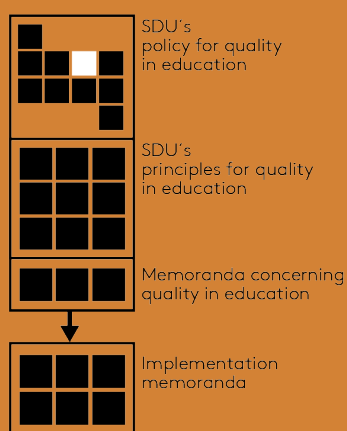


3. Sub-policy for Study Environment



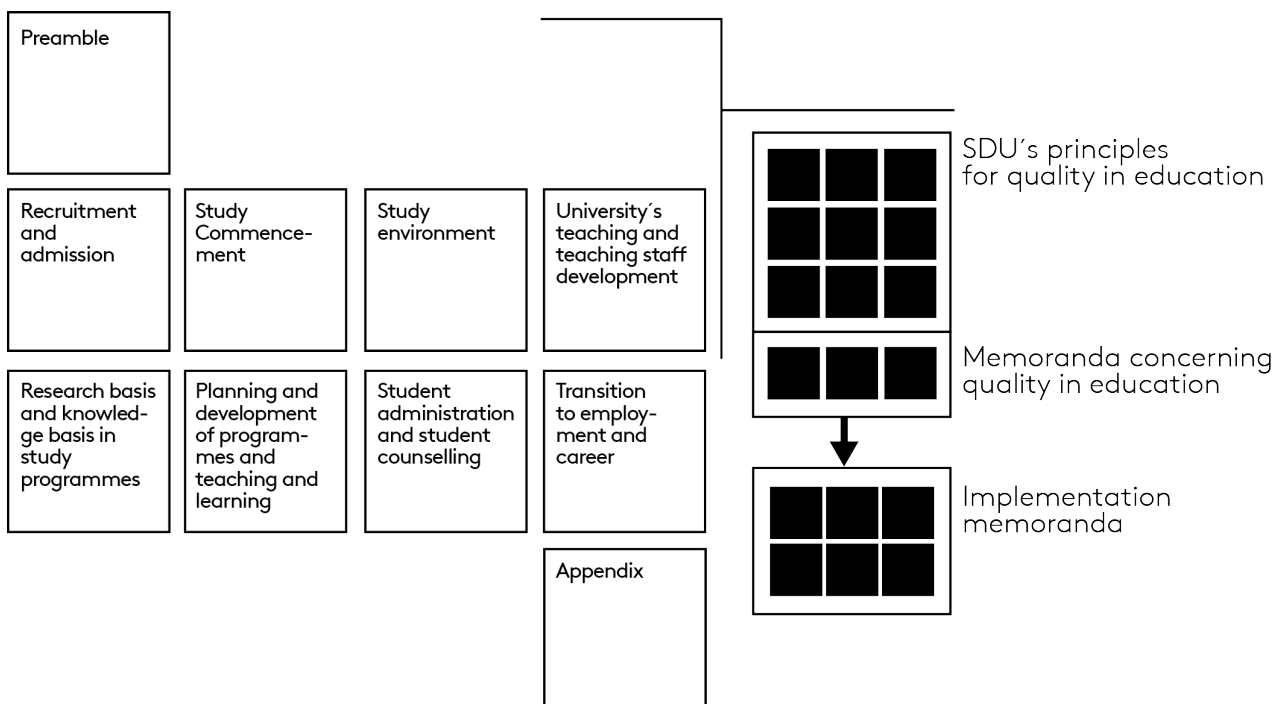
Colophon

Document status: Applicable
Approved as of: 11/03/2022
Approved by: The Executive Board
Applicable to: SDU
Website: www.sdu.dk/uddannelseskvalitet
File number: 18/5558

3. Sub-policy for Study Environment

Preview over documents for SDU's Quality in Education

SDU's
policy for quality in education



3. Sub-policy for Study Environment

Content

Purpose	3
Frameworks	3
Quality objectives	4
3.1 The students experience a study environment that supports their academic development in the best possible way.....	4
3.2 Students, university employees and relevant parties collaborate on a constant basis in order to ensure and develop a good study environment.	6

Purpose

SDU creates good frameworks for the study environment on a constant basis.

The university promotes the students' completion of the programme by focusing on the academic, physical, psychological and societal study environment.

Frameworks

External

- [Executive Order for the Act on the Students' Educational Environment](#)
- [ESG 1.5: Teaching staff](#)
- [ESG 1.6: Learning resources and student support](#)
- [ESG 1.7: Information management](#)

Internally related documents

- [SDU Strategy](#)
- Framework contract
- [Disability policy: Code on equal access and opportunities for students at SDU](#)
- [Language policy](#)
- [SDU's principles for internationalisation of education](#)
- [SDU's principles for student participation in the work with educational quality](#)

Quality objectives

3.1 The students experience a study environment that supports their academic development in the best possible way.

Standard 3.1.1 The university provides good physical frameworks that meet with the university's underlying principles of activating teaching and active learning.

Indikator 3.1.1.1 The size and layout of the classrooms is adequate for the number of students and may be adapted when necessary and if possible.

Follow-up	The central administrative report on quality in education
Responsible parties	University Director

Indikator 3.1.1.2 The furniture is up to date and suitable for educational purposes.

Follow-up	The central administrative report on quality in education
Responsible parties	University Director

Indikator 3.1.1.3 The classrooms are equipped with up-to-date technical equipment, as well as suitable heating and ventilation.

Follow-up	The central administrative report on quality in education
Responsible parties	University Director

Indikator 3.1.1.4 The students have 24-7 access to good study workplaces.

Follow-up	The central administrative report on quality in education
Responsible parties	University Director

Indikator 3.1.1.5 Users' committees enable the university to have an on-going dialogue with the students regarding the standard of teaching facilities, as well as development needs and opportunities in this area.

Follow-up	The central administrative report on quality in education
Responsible parties	University Director

Standard 3.1.2 The students have the opportunity to participate in activities aimed at promoting a good study environment.

Indikator 3.1.2.1 Users' committees enable the university to have an on-going dialogue with the students regarding their experiences of academic and social activities, as well as their needs and preferences in this area.

Follow-up	a. Programme report b. The central administrative report on quality in education
Responsible parties	a. Head of Studies b. University Director

Indikator 3.1.2.2 Social aspects of the study environment are supported by facilities on the campus.

Follow-up	The central administrative report on quality in education
Responsible parties	University Director

Standard 3.1.3 The university supports opportunities for physical activity as a key element in a good study environment

Indikator 3.1.3.1 Sports facilities are available for use on the campus and/or arrangements can be made for use of facilities outside of the campus.

Follow-up	The central administrative report on quality in education
Responsible parties	University Director

Indikator 3.1.3.2 Users' committees enable the university to have an on-going dialogue with the students regarding their opportunities for physical activity, as well as development needs and opportunities in this area.

Follow-up	The central administrative report on quality in education
Responsible parties	University Director

3.2 Students, university employees and relevant parties collaborate on a constant basis in order to ensure and develop a good study environment.

Standard 3.2.1 The students are provided with the opportunity to have an influence on the study environment.

Indikator 3.2.1.1 The students are provided with information on how they can have an influence.

Follow-up	Faculty programme report
Responsible parties	Dean

Indikator 3.2.1.2 The university provides the necessary facilities for student organisations and associations in order to contribute towards the students being heard, as well as to the development of SDU as the students' university of choice.

Follow-up	a. Faculty programme report b. The central administrative report on quality in education
Responsible parties	a. Dean b. University Director

Standard 3.2.2 The university collaborates with the cities in which the university has campuses in order to create good frameworks for a good life at university.

Indikator 3.2.2.1 The university has a running dialogue with the cities' relevant parties regarding the frameworks for a good life at university.

Follow-up	The central administrative report on quality in education
Responsible parties	University Director