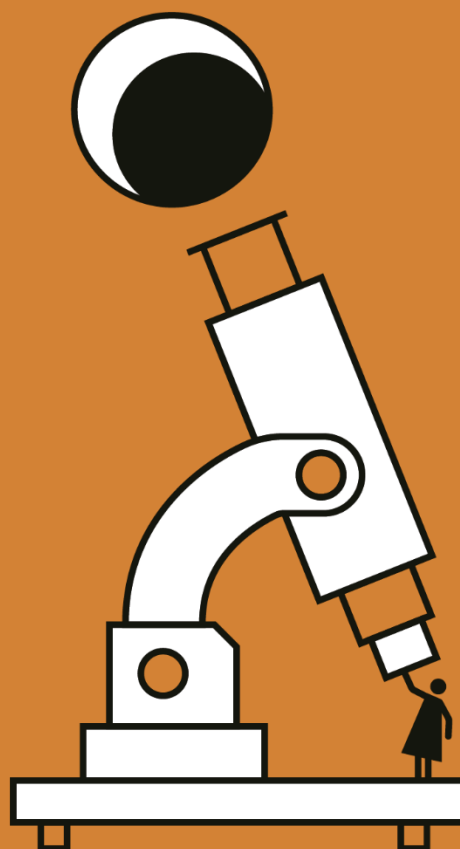
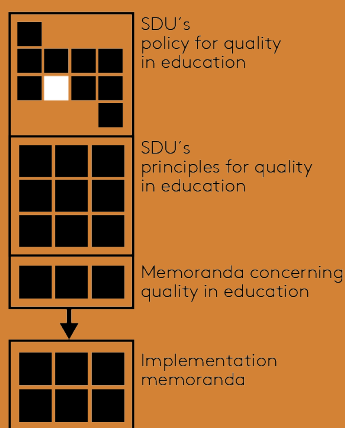


# 6. Sub-policy for Planning and Development of Programmes and Teaching and Learning



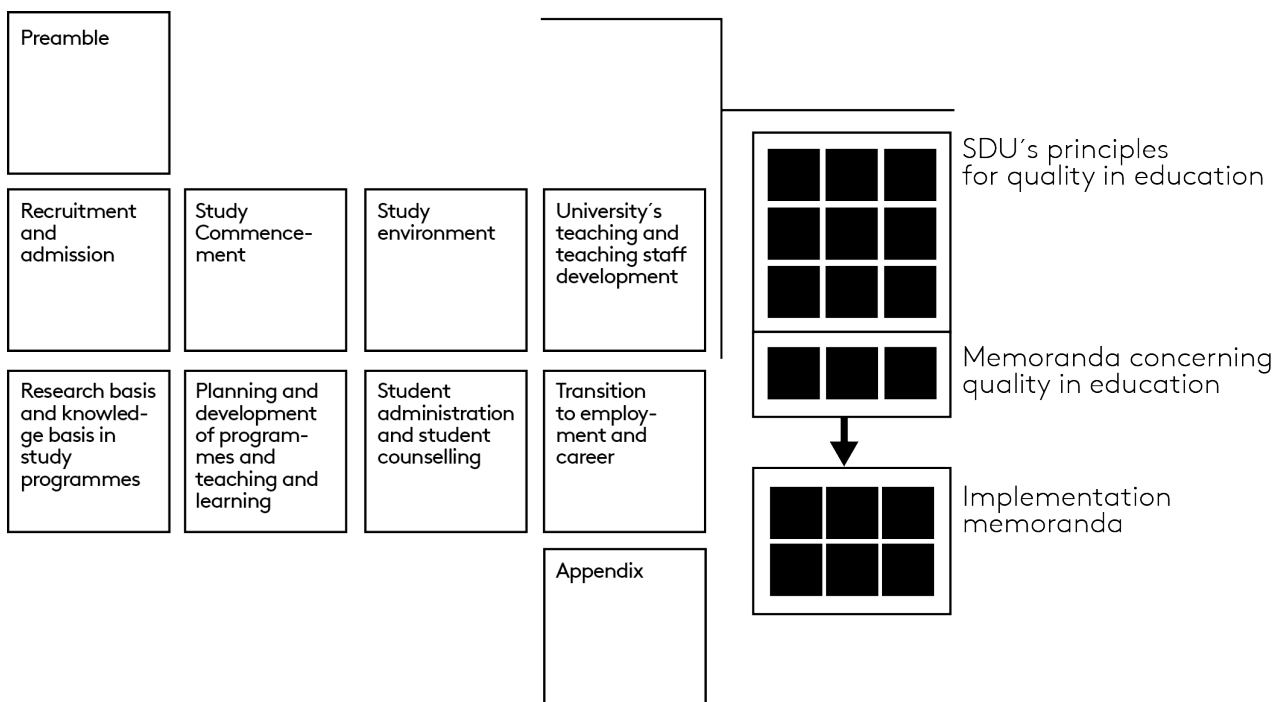
# Colophon

**Document status:** Applicable  
**Approved as of:** 13/06/2018  
**Approved by:** The Executive Board  
**Applicable to:** SDU  
**Website:** [www.sdu.dk/uddannelseskvalitet](http://www.sdu.dk/uddannelseskvalitet)  
**File number:** 18/5558

## 6. Sub-policy for Planning and Development of Programmes and Teaching and Learning

Preview over documents for SDU's Quality in Education

SDU's  
policy for quality in education



# 6. Sub-policy for Planning and Development of Programmes and Teaching and Learning

## Content

---

<b>Purpose</b> .....	<b>3</b>
<b>Frameworks</b> .....	<b>3</b>
<b>Quality objectives</b> .....	<b>5</b>
6.1 The level of the programme and Degree Qualifications Profile correspond to the typology of the qualification framework, and the content and examinations in the programme reflect that there is coherence between the programme’s structure, learning objectives, basis for admission and examinations. ....	5
6.2 The individual programme develops and highlights the programme’s Degree Qualifications Profile, focusing on labour market relevance. ....	7
6.3 The programme’s planning, teaching and examination supports the students’ achievement of targets for learning outcomes, as described in the competence profile. ....	8

# Purpose

---

The programme management shall ensure that there is coherence between the programme's

- admission requirements
- content
- learning objectives
- teaching method and method of assessment

The programme management supports the preparation of the programme and teaching, for the students to complete the programme in good time and that the programme is developed on an on-going basis.

All teaching activities comply with the university's *Underlying principles of activating teaching and active learning*.

# Frameworks

---

## External

- [The University Act, the Executive Order on Bachelor and Master's Programmes at Universities, the Executive Order on University Examinations and Grading, the Executive Order on Professional Master's Programmes at Universities, the Executive Order on Part-Time Programmes at Universities, the Executive Order on Admission and Enrolment on Bachelor Programmes at Universities and the Executive Order on Admission and Enrolment on Master's Degree Programmes at Universities](#)
- [Danish Qualifications Framework for Higher Education](#)
- [ESG 1.2: Design and approval of programmes](#)
- [ESG 1.3: Student-centered learning, teaching and assessment](#)
- [ESG 1.4: Student admission, progression, recognition and certification](#)
- [ESG 1.5: Teaching staff](#)
- [ESG 1.6: Learning resources and student support](#)

## Internally related documents

- [Principles for reliable and valid exams](#)

- [Underlying principles of activating teaching and active learning](#)
- [Language policy](#)
- [SDU's principles for student evaluation of entire programmes](#)
- [SDU's principles for the evaluation of programme elements](#)
- [SDU's principles for evaluation of entire programmes with the involvement of external experts](#)
- [SDU's principles for the development of new programmes](#)
- [SDU's principles for graduate surveys](#)
- [SDU's principles for internationalisation of education](#)
- [SDU's principles for student participation in the work with educational quality](#)

# Quality objectives

---

## 6.1 The level of the programme and Degree Qualifications Profile correspond to the typology of the qualification framework, and the content and examinations in the programme reflect that there is coherence between the programme's structure, learning objectives, basis for admission and examinations.

**Standard 6.1.1** The programme's objectives for learning outcomes are described in a Degree Qualifications Profile that is prepared according to the relevant typology of the Danish qualification framework.

Indikator 6.1.1.1 The programme's regulations contain a Degree Qualifications Profile in accordance with the qualification framework.

Follow-up	The faculty's approval of programme regulations
Responsible parties	Head of Studies

**Standard 6.1.2** There is coherence between the admission requirements, structure, learning objectives and Degree Qualifications Profile of the programme.

Indikator 6.1.2.1 The programme's regulations contain a description of the academic progression and coherence from the first to last semester.

Follow-up	The faculty's approval of programme regulations
Responsible parties	Head of Studies

Indikator 6.1.2.2 The programme regulations describe how content, level and learning activities for subject elements are planned for the first year of the programme in accordance with the programme's admission requirements.

Follow-up	The faculty's approval of programme regulations
-----------	---

Responsible parties	Head of Studies
---------------------	-----------------

Indikator 6.1.2.3 The programme's regulations contain a description of the coherence between learning objectives for the individual subject and the programme's Degree Qualifications Profile.

Follow-up	The faculty's approval of programme regulations
Responsible parties	Head of Studies

Indikator 6.1.2.4 The students indicate that there is coherence between the programme's structure, learning objectives and Degree Qualifications Profile in their evaluation of the entire programme.

Follow-up	Programme report
Responsible parties	Head of Studies

**Standard 6.1.3 The programme adheres to principles of choice of teaching methods and methods of assessment that are in accordance with the university's principles of activating teaching and active learning.**

Indikator 6.1.3.1 The principles of choice of teaching methods and methods of assessment are described in the programme regulations.

Follow-up	The faculty's approval of programme regulations
Responsible parties	Head of Studies

**Standard 6.1.4 The programme systematically involves the students' feedback in the programme's development.**

Indikator 6.1.4.1 A plan exists for regular student evaluations of the entire programme.

Follow-up	Programme report
Responsible parties	Head of Studies

**Standard 6.1.5 The programme systematically involves external experts in the programme's development.**

Indikator 6.1.5.1 A plan exists for regular evaluations of the programme with the involvement of external experts.

Follow-up	Programme report
Responsible parties	Dean

## 6.2 The individual programme develops and highlights the programme's Degree Qualifications Profile, focusing on labour market relevance.

**Standard 6.2.1 The employment profile/opportunities of the programme are described.**

Indikator 6.2.1.1 A description of the employment profile/opportunities of the programme can be seen in the programme regulations.

Follow-up	The faculty's approval of programme regulations
Responsible parties	Head of Studies

**Standard 6.2.2 The programme's Degree Qualifications Profile and content are developed through dialogue with the programme's advisory board/employers.**

Indikator 6.2.2.1 The minutes of the meeting with the advisory board reflects that the Degree Qualifications Profile has been discussed.

Follow-up	The study board's processing of the programme's competence profile
Responsible parties	Head of Studies

Indikator 6.2.2.2 The programme has a plan/an annual cycle for collaboration with the advisory board. The plan/annual cycle contains, i.a., communication, meeting structure and development perspective.

Follow-up	Programme report
Responsible parties	Head of Studies

**Standard 6.2.3 Graduates on the programme find relevant employment.**

Indikator 6.2.3.1 If the programme's key figures for unemployment are unsatisfactory for the most recently calculated year, the programme must clarify the circumstances.

Follow-up	Programme report
Responsible parties	Head of Studies

Indikator 6.2.3.2 If the graduates on the programme do not get relevant work, the programme must clarify the circumstances.

Follow-up	Programme report
-----------	------------------



Responsible parties	Head of Studies
---------------------	-----------------

## 6.3 The programme's planning, teaching and examination supports the students' achievement of targets for learning outcomes, as described in the competence profile.

**Standard 6.3.1** The programme is planned so that the student can achieve the programme's objective for learning outcomes within the prescribed duration of study and with a total workload corresponding to the programme's extent of ECTS points.

Indikator 6.3.1.1 The programme meets the University's quality objectives for duration of study. If the key figures of study for the most recently calculated year demonstrate an unsatisfactory status/development, the programme must provide a detailed account of the situation.

Follow-up	Programme report
Responsible parties	Head of Studies

Indikator 6.3.1.2 The programme meets the University's quality objective for course activity (lessons per semester). If the key figures for course activity for the most recently calculated year demonstrate an unsatisfactory status/development, the programme must provide a detailed account of the situation.

Follow-up	Programme report
Responsible parties	Head of Studies

Indikator 6.3.1.3 The programme must follow up on the status of study intensity on the basis of the latest statement via UddannelsesZoom. If the status proves unsatisfactory in relation to the University's centrally planned objectives for this, the programme must provide a detailed account of the situation.

Follow-up	Programme report
Responsible parties	Head of Studies

**Standard 6.3.2** Teaching and other learning activities, such as examinations, are implemented in such a way that the student is supported in achieving the targets set for learning outcomes.

Indikator 6.3.2.1 The programme regulations reflect that there is coherence between learning objectives, teaching method and method of assessment for each subject/course.

Follow-up	The faculty's approval of programme regulations
Responsible parties	Head of Studies

Indikator 6.3.2.2 The programme has described the criteria for the approval of credit-earning activities completed outside of the university, including the criteria for the final allocation of ECTS and grades where appropriate.

Follow-up	Programme report
Responsible parties	Head of Studies

Indikator 6.3.2.3 A plan exists for systematic teaching evaluations.

Follow-up	Programme report
Responsible parties	Head of Studies

Indikator 6.3.2.4 The pedagogical quality of the teaching is evaluated as a part of the additional teaching evaluation

Follow-up	Programme report
Responsible parties	Head of Studies

Indikator 6.3.2.5 A plan exists for the students' evaluation of the programme elements outside of the university, e.g. study periods abroad, stay in companies and clinical stay.

Follow-up	Programme report
Responsible parties	Head of Studies

Indikator 6.3.2.6 The development of student participation and examination performance is monitored, and actions are initiated for their improvement if necessary

Follow-up	Programme report
Responsible parties	Head of Studies

**Standard 6.3.3 The students' achievement of targets set for learning outcomes are monitored on an on-going basis by the faculty and programme, based on the relevant programme's stakeholders, e.g. external examiners and advisory boards.**

Indikator 6.3.3.1 In the event of unsatisfactory circumstances, the programme or faculty must clarify the circumstances and initiate relevant actions.

Follow-up	a. Programme report b. Faculty programme report
Responsible parties	a. Head of Studies b. Dean