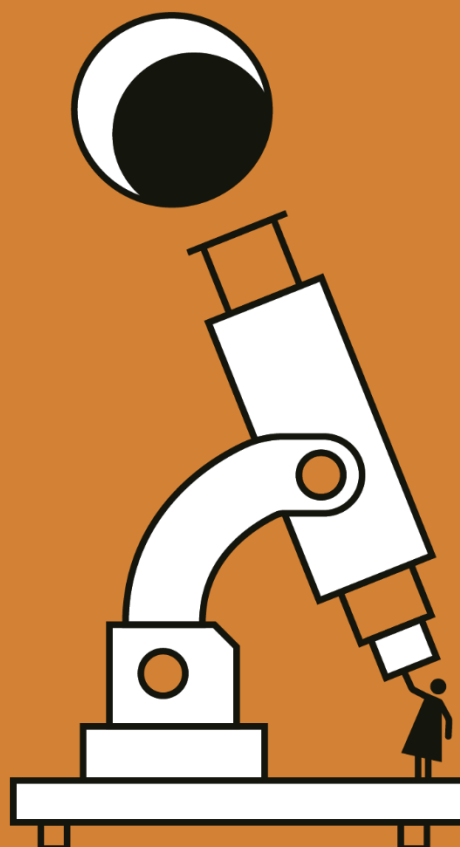
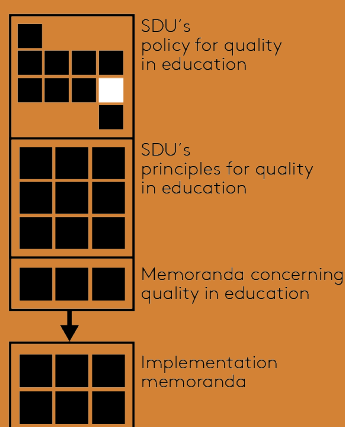


8. Sub-policy for Transition to Employment and Career



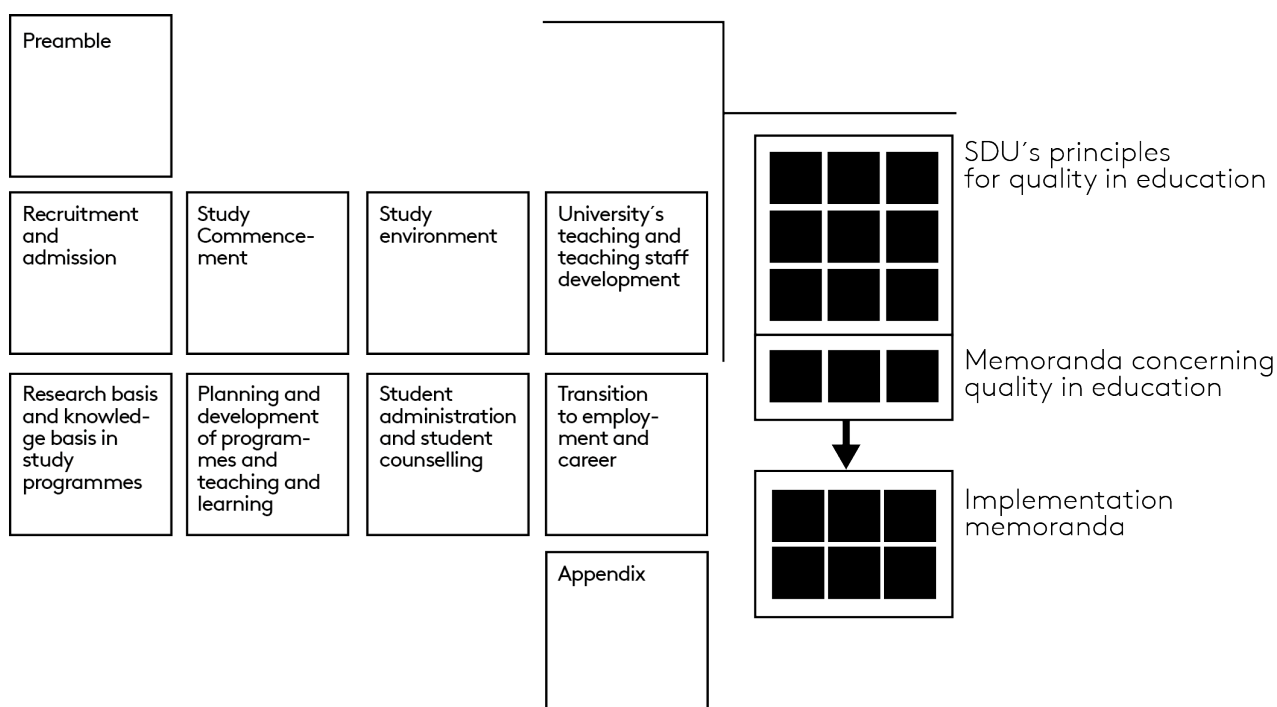
Colophon

Document status: Applicable
Approved as of: 11/03/2022
Approved by: The Executive Board
Applicable to: SDU
Website: www.sdu.dk/uddannelseskvalitet
File number: 18/5558

8. Sub-policy for Transition to Employment and Career

Preview over documents for SDU's Quality in Education

SDU's policy for quality in education



8. Sub-policy for Transition to Employment and Career

Content

Purpose	3
Frameworks	3
Quality objectives	4
8.1 SDU supports the student's opportunity for employment through career guidance.....	4
8.2 SDU is an attractive cooperation partner.	5

Purpose

SDU enhances the students' opportunities and prerequisites for securing a job and a good working life.

Frameworks

External

- [ESG 1.6: Learning resources and student support](#)
- [ESG 1.7: Information management](#)

Internally related documents

- [SDU Strategy](#)
- [SDU's principles for student and career guidance](#)
- [SDU's principles for graduate surveys](#)
- [Language policy](#)

Quality objectives

8.1 SDU supports the student's opportunity for employment through career guidance.

Standard 8.1.1 All students have access to information and guidance regarding jobs, careers and completion of their studies.

Indikator 8.1.1.1 The university's website contains an overview of events and activities relating to the transition from education to career (career days, career seminars, workshops, presentations by companies and other relevant groups).

Follow-up	The central administrative report on quality in education
Responsible parties	University Director

Indikator 8.1.1.2 The university's website provides access to information and guidance regarding jobs, careers and completion of studies.

Follow-up	a. Programme report b. The central administrative report on quality in education
Responsible parties	a. Head of Studies b. University Director

Indikator 8.1.1.3 The students declare that they have had sufficient access to information and guidance regarding jobs, careers and completion of their studies.

Follow-up	Faculty programme report
Responsible parties	Dean

Standard 8.1.2 The students are provided with access to individual career guidance.

Indikator 8.1.2.1 The university's website contains an overview of offers concerning central and/or decentralised individual career guidance activities.

Follow-up	a. Programme report b. The central administrative report on quality in education
Responsible parties	a. Head of Studies b. University Director

Indikator 8.1.2.2 The students declare in the university's graduate survey that they have had access to individual career guidance when needed.

Follow-up	Faculty programme report
Responsible parties	Dean

8.2 SDU is an attractive cooperative partner.

Standard 8.2.1 The university facilitates networking between companies and students in order to enhance the students' subsequent search for jobs and employment opportunities.

Indikator 8.2.1.1 The university's website contains an overview of activities that support searching for jobs and networking relationships.

Follow-up	The central administrative report on quality in education
Responsible parties	University Director

Indikator 8.2.1.2 The individual programmes collaborate with employers on study-related activities, e.g. project-oriented courses.

Follow-up	Programme report
Responsible parties	Head of Studies

Indikator 8.2.1.3 The students have the opportunity to search for jobs relevant to their study through the university's job bank.

Follow-up	The central administrative report on quality in education
Responsible parties	University Director

Indikator 8.2.1.4 The students have the opportunity to create a profile in the university's job bank. This makes it easy for employers to search for and contact relevant students.

Follow-up	The central administrative report on quality in education
Responsible parties	University Director

Indikator 8.2.1.5 The programme must clarify the circumstances if the programme's key figures for graduate unemployment for the most recently calculated year are unsatisfactory.

Follow-up	Programme report
Responsible parties	Head of Studies