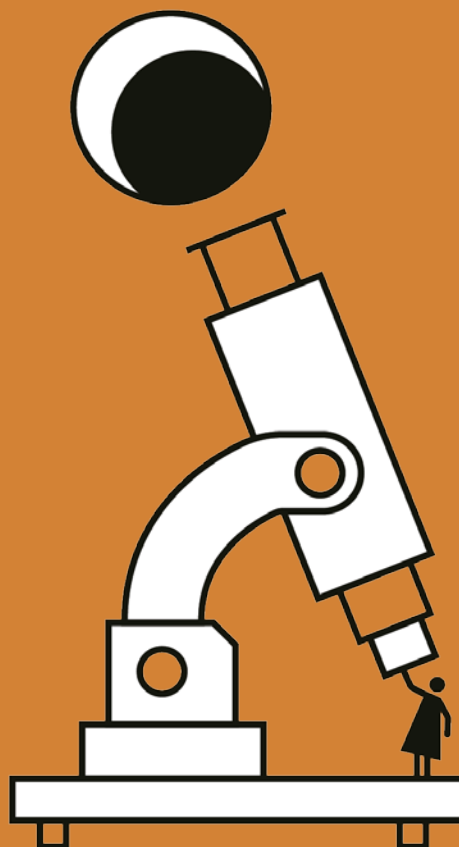
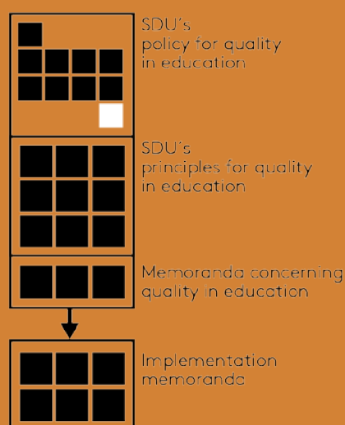


Policy for quality in education: Appendix



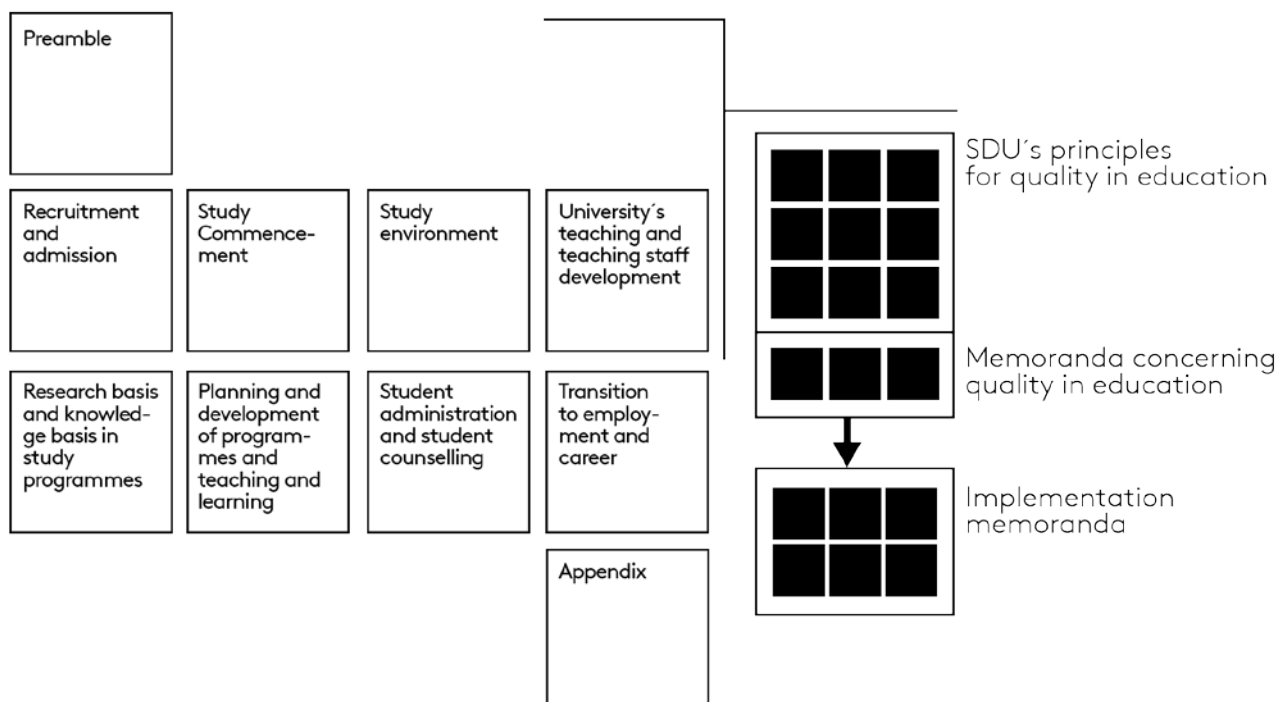
Colophon

Document status: Applicable
Approved as of: 13/06/2018
Approved by: The Executive Board
Applicable to: SDU
Website: www.sdu.dk/uddannelseskvalitet
File number: 18/5558

Policy for educational quality: Appendix

Preview over documents for SDU's Quality in Education

SDU's
policy for quality in education



POLICY FOR EDUCATIONAL QUALITY: APPENDIX

Quality objectives		Key figures – full-time					Quality indicators – part-time					Surveys					Principles											
		Drop-out	Duration of study	Teaching activity	Unemployment	Research coverage – VIP/DVIP	Research coverage – STÁ/MIP	Admissions	Population	Graduates	Research basis/knowledge basis	Learning outcomes	Quality and relevance experienced	Study environment survey	Study Commencement survey	Evaluation of entire programmes	Evaluation of programme elements	Evaluation with external experts	Graduate surveys	Graduate surveys	Evaluation with external experts	Evaluation of programme elements	Internationalisation of programmes	Student participation	Evaluation of entire programmes	Study Commencement	Development of new programmes	Talent development
Unit/role responsible for preparation CA: Central Administration (Director) FAC: Faculty (Dean) PROG: Programme (Head of Studies)		CA	CA	FAC	MHE	FAC	FAC	CA	CA	CA	FAC	FAC	FAC	CA	FAC	FAC/PRO	FAC/PRO	FAC/PRO	FAC	FAC	FAC/PRO	FAC/PRO	FAC/CA	FAC/CA	FAC/PRO	FAC/CA	FAC	FAC
1.1	SDU collaborates regionally, nationally and internationally to provide information about the university's programme offers.							x							x													
1.2	SDU has a trustworthy communication regarding programmes at the university.							x							x													
1.3	Applicants for SDU's programmes are provided with relevant knowledge on their educational opportunities at the university.							x							x													
1.4	The admission forms for SDU's programmes ensure that the students selected have the right qualifications to complete the course.	x	x					x																				
2.1	The new students receive relevant information on their programme in good time. In addition, the students are informed of where they can search for further information.	x	x						x						x													
2.2	The university creates good conditions for early integration into the academic and social life as a university student.	x	x						x			x																
3.1	The students experience a study environment that supports their academic development in the best possible way.	x	x										x															
3.2	Students, university employees and relevant parties collaborate on a constant basis in order to ensure and develop a good study environment.												x		x													

POLICY FOR EDUCATIONAL QUALITY: APPENDIX

Quality objectives		Key figures - full-time					Quality indicators - part-time					Surveys					Principles											
		Drop-out	Duration of study	Teaching activity	Unemployment	Research coverage – VIP/DVIP	Research coverage – STÅ/VIP	Admissions	Population	Graduates	Research basis/knowledge basis	Learning outcomes	Quality and relevance experienced	Study environment survey	Study Commencement survey	Evaluation of entire programmes	Evaluation of programme elements	Evaluation with external experts	Graduate surveys	Graduate surveys	Evaluation with external experts	Evaluation of programme elements	Internationalisation of programmes	Student participation	Evaluation of entire programmes	Study Commencement	Development of new programmes	Talent development
		CA.	CA	FAC	MHE	FAC	FAC	CA	CA	CA	FAC	FAC	FAC	CA.	FAC	FAC/PR	FAC/PR	FAC/PR	FAC	FAC	FAC/PR	FAC/PR	FAC/CA	FAC/CA	FAC/PR	FAC/CA	FAC	FAC
	Unit/role responsible for preparation CA: Central Administration (Director) FAC: Faculty (Dean) PROG: Programme (Head of Studies)																											
4.1	The teachers have pedagogical and didactic knowledge and competences that are developed on an on-going basis.	x	x	x												x												
4.2	SDU supports, recognises and publicises the practice and development of teaching and learning.	x	x	x												x												
5.1	SDU's Master's, Professional Master's and Bachelor programmes are research-based and linked to a high-quality research environment.	x	x			x	x		x	x																		
5.2	SDU's professional Bachelor and Diploma programmes have, as a minimum, a knowledge base that is development- and research-oriented, and the programmes are linked to an active, high-quality academic environment.	x	x						x	x																		
6.1	The programme's level and competence profile correspond to the typology of the qualification framework, and the content and examinations in the programme reflect that there is coherence between the programme's structure, learning objectives and basis for admission.	x	x																									
6.2	The individual programme develops and highlights the programme's competence profile, focusing on labour market relevance.					x																						
6.3	The programme's planning, teaching and examination support the students' achievement of targets for learning outcomes, as described in the competence profile.	x	x	x																								

POLICY FOR EDUCATIONAL QUALITY: APPENDIX

Quality objectives		Key figures – full-time					Quality indicators – part-time					Surveys					Principles											
		Drop-out	Duration of study	Teaching activity	Unemployment	Research coverage - VIP/DVIP	Research coverage - Stud/VIP	Admissions	Population	Graduates	Research basis/knowledge basis	Learning outcomes	Quality and relevance experienced	Study environment survey	Study Commencement survey	Evaluation of entire programmes	Evaluation of programme elements	Evaluation with external experts	Graduate surveys	Graduate surveys	Evaluation with external experts	Evaluation of programme elements	Internationalisation of programmes	Student participation	Evaluation of entire programmes	Study Commencement	Development of new programmes	Talent development
Unit/role responsible for preparation CA: Central Administration (Director) FAC: Faculty (Dean) PROG: Programme (Head of Studies)		CA.	CA	FAC	MHE	FAC	FAC	CA	CA	CA	FAC	FAC	FAC	CA.	FAC	FAC/PRO	FAC/PRO	FAC/PRO	FAC	FAC	FAC/PRO	FAC/PRO	FAC/CA	FAC/CA	FAC/PRO	FAC/CA	FAC	FAC
7.1	The students receive relevant information on their programme in good time. In addition, the students are informed of where they can search for further information.	x	x						x							x												
7.2	SDU supports the student's completion of the programme through student counselling.	x	x						x							x												
7.3	SDU's Student Administration is transparent, effective and competent.	x	x						x							x												
7.4	SDU's Student Administration supports the work of the study administration by providing quality assurance and quality development of the programme.	x	x						x																			
8.1	SDU supports the student's opportunity for employment through career guidance.				x					x		x				x		x										
8.2	The university is an attractive cooperation partner.				x					x		x				x												