

Webinar: Marie Skłodowska-Curie Actions (MSCA) i Horizon Europe – introduktion til delprogrammerne

Postdoctoral Fellowships, Doctoral Networks, Staff
Exchanges, COFUND og MSCA and Citizens

Anne Maibohm amma@ufm.dk

Marlis Erichsen mer@ufm.dk



EuroCenter – Nationalt Kontaktpunkt for Horizon 2020 og Horizon Europe



Horizon 2020

- Om Horizon 2020
- Ansøgning & Projekt
- FAG om Horizon 2020
- Om EuroCenter og EU-DK Support
- Aktuelt
- Statistik

Om EuroCenter og EU-DK Support

EuroCenter, Styrelsen for Forskning og Uddannelse, og EU-DK Support netværket tilbyder rådgivning om Horizon 2020. Søger du råd om Horizon 2020 kan du enten kontakte EuroCenter eller en af de mange EU-rådgivere, der er over hele landet.

EuroCenters services

EuroCenter er nationalt kontaktpunkt (NCP) for Horizon 2020 i Danmark, og vores opgave er at rådgive danske forsknings- og innovationsmiljøer om Horizon 2020. Vores services omfatter:

- Rådgivning pr. mail og telefon
- Kundemøder
- Webinarer, informationsmøder, netværksmøder, kurser m.m.
- Magasinet EUindblik
- Twitter: twitter.com/EuroCenter_DK
- LinkedIn www.linkedin.com/company/eurocenter-dk

> [Se oversigt over EU-rådgivere og programområder i EuroCenter.](#)

- Udskriv
- Læs højt
- Facebook
- LinkedIn
- Twitter
- Send

Kontakt

Mette Trøjahn Petersen
Kontaktfunktor
Telefon: +45 72 31 80 59
E-mail: mtp@ufm.dk



Horizon 2020

- Om Horizon 2020
- Ansøgning & Projekt
- FAG om Horizon 2020
- Om EuroCenter og EU-DK Support
- Aktuelt
- Statistik

Om EuroCenter og EU-DK Support

EuroCenter, Styrelsen for Forskning og Uddannelse, og EU-DK Support netværket tilbyder rådgivning om Horizon 2020. Søger du råd om Horizon 2020 kan du enten kontakte EuroCenter eller en af de mange EU-rådgivere, der er over hele landet.

EuroCenters services

EuroCenter er nationalt kontaktpunkt (NCP) for Horizon 2020 i Danmark, og vores opgave er at rådgive danske forsknings- og innovationsmiljøer om Horizon 2020. Vores services omfatter:

- Rådgivning pr. mail og telefon
- Kundemøder
- Webinarer, informationsmøder, netværksmøder, kurser m.m.
- Magasinet EUindblik
- Twitter: twitter.com/EuroCenter_DK
- LinkedIn www.linkedin.com/company/eurocenter-dk

> [Se oversigt over EU-rådgivere og programområder i EuroCenter.](#)

- Udskriv
- Læs højt
- Facebook
- LinkedIn
- Twitter
- Send

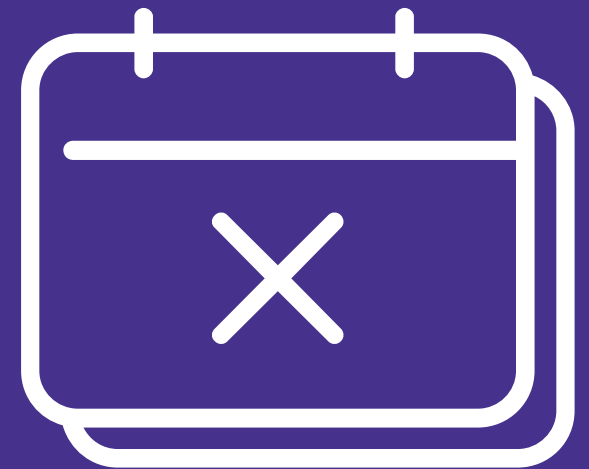
Kontakt

Mette Trøjahn
Kontaktfunktor
Telefon: +45 72 31 80 59
E-mail: mtp@ufm.dk



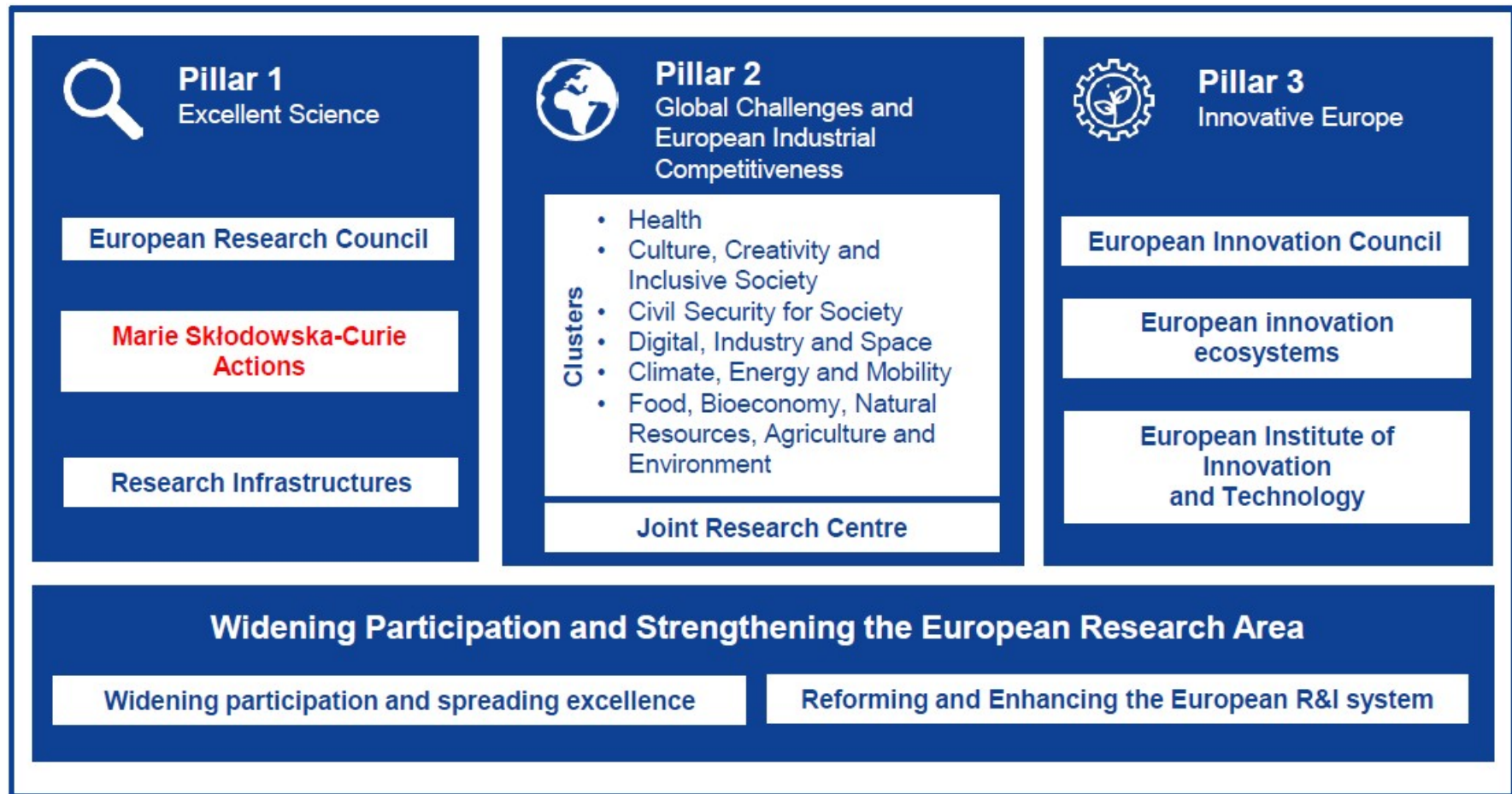
Program

- Status for Horizon Europe
- Doctoral Networks
- Postdoctoral Fellowships
- Staff Exchanges
- COFUND
- MSCA and Citizens
- Tid til spørsmål



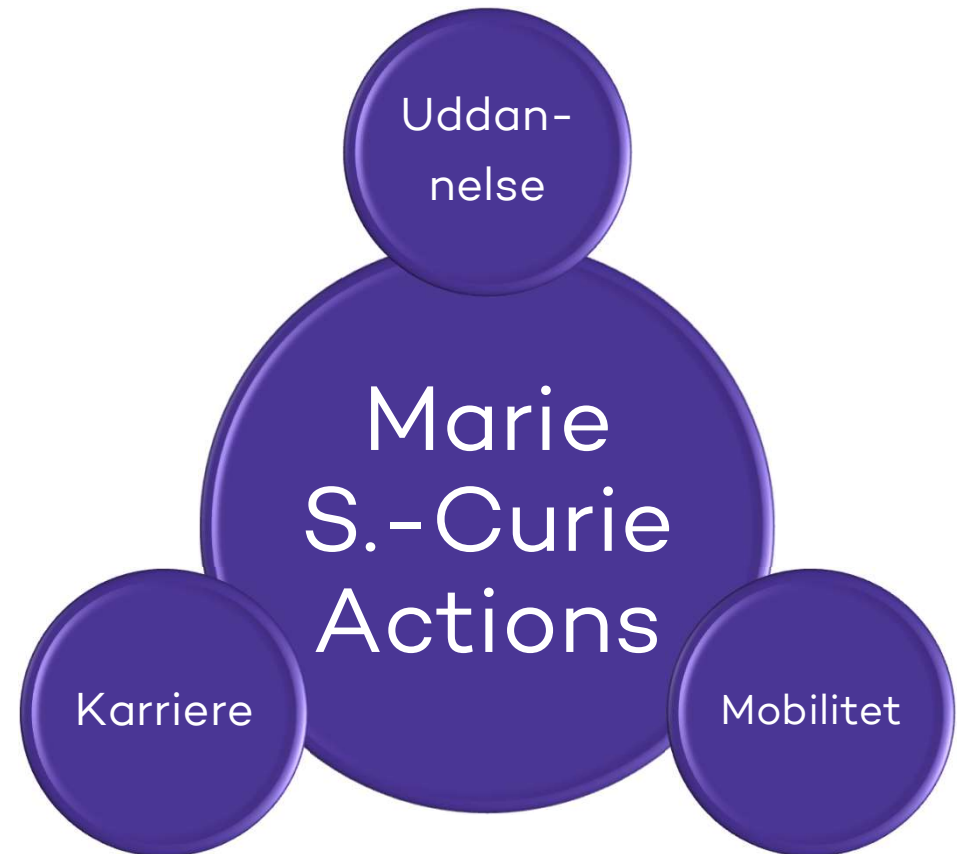
Horizon Europe

Budget: € 95.5 mia. (2021-2027)



Marie Skłodowska-Curie Actions - bærende principper

- Bottom up – frit emnevalg
- Mere fokus på vejlederen
- Open Science
- Synergier
- Internationalt (hele verden)
- Intersektorielt
- Årlige calls



Definition af 'intersektoriel'

Akademisk

Universiteter

Offentlige
Forskningsinstitutioner

Private Non-profit
Forskningsinstitutioner

Internationale
Europæiske
Interesseorganisationer



Ikke-Akademisk

Civilsamfunds-
organisationer

Industri

Offentlig sektor

Andre
(hospitaller/museer)

European Green Deal

- MSCA skal bidrage til Green Deal.
- Der vil være et MSCA Green Charter, som anbefaler tiltag for at minimere klimaaftryk.
- Beskrives som en del af implementeringen af forskningsaktiviteterne.
- Evaluatører briefes om, at det er ”et plus”.
- Det skal **ikke** afløse bottom up princippet!

Evaluering

Evalueringspaneler

- Chemistry - CHE
- Economic Sciences - ECO
- ICT & Engineering - ENG
- Earth & Environmental Sciences - ENV
- Life Sciences - LIF
- Mathematics - MAT
- Physics - PHY
- Social Sciences & Humanities – SOC



Ansøgninger evalueres af minimum 3 uafhængige eksperter



Doctoral Networks

DN-callet 2021

Åbner: 4. maj 2021

Deadline: 16. november 2021, 17.00

Budget: 402,95 mio. eur.

Et forsknings- og uddannelsesprogram for ph.d.er

Internationalt, intersektorielt, interdisciplinært.

Formål

At uddanne **kreative, entreprenante, innovative og modstandsdygtige ph.d.er**, som kan tackle nuværende og fremtidige udfordringer.

At omsætte **viden og ideer til produkter og services til økonomisk og samfundsmæssig nytte.**



Et typisk Doctoral Network

Et **konsortie** af organisationer fra forskellige lande og sektorer.

Foreslår et **fælles forsknings- og uddannelsesprogram**.

Rekrutterer forskere (ph.d.er) på tværs af konsortiet – hver forsker har sit **individuelle forskningsprojekt**.

Uddannelse i videregående **forskningskompetencer** og **tværgående kompetencer** – lokalt og på tværs af netværket.

Fælles **netværksaktiviteter**.

Udstationeringer for hver forsker til en anden sektor (**akademisk til ikke-akademisk**, eller omvendt).

Støttebeløb

En landekorrigeringskoefficient på 132% anvendes på "living allowance" for DK

MSCA Doctoral Networks	Contributions for recruited researchers per person-month					Institutional unit contributions per person-month	
	Living allowance	Mobility allowance	Family allowance (if applicable)	Long-term leave allowance (if applicable)	Special needs allowance (if applicable)	Research, training and networking contribution	Management and indirect contribution
	EUR 3 400	EUR 600	EUR 660	EUR 4 000 x % covered by the beneficiary	requested unit ⁴⁸ x (1/number of months)	EUR 1 600	EUR 1 200

Deltagelsesregler - Støttemodtagere

Minimum tre organisationer fra tre forskellige medlemslande (ML) eller associerede lande (AL). Heraf **mindst én fra et ML**.

Tredjelandes deltagelse er mulig – som **associerede partnere**.

Akademiske og **ikke-akademiske** organisationer samarbejder.

Konsortiet

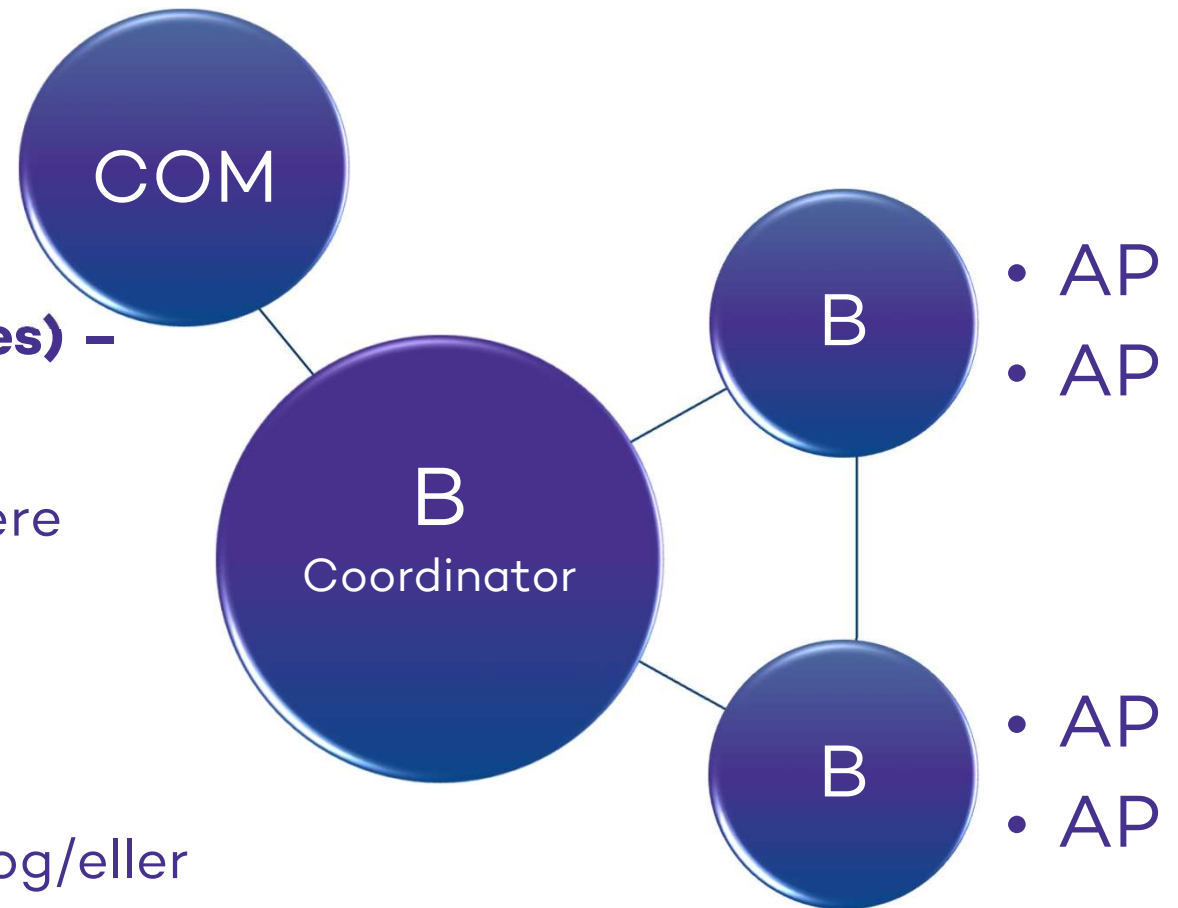
Deltagere – to typer:

Støttemodtagere (Beneficiaries) – ML/AL

Rekrutterer og uddanner forskere

Associerede Partnere

Er værter for udstationeringer og/eller bidrager til uddannelsesaktiviteter



Projektkriterier

- **4 års** projektperiode - ansættelse i 3 år.
- Støttemodtagere skal rekruttere **mindst én** ph.d.-studerende.
- **40% reglen** – maks. budget som kan allokeres til ét land.
- Call deadlines **hvert år**.

Tre typer netværk

- **Generelle**
- **Industrial Network** – min. 50% af tiden skal tilbringes i en ikke-akademisk organisation.
- **Joint Network** – Fælles eller dobbelt/flere grader fra mindst to ML/AL. Mindst tre organisationer skal kunne tildele en ph.d.-grad. Krav om forhåndsftale.

Template til forhåndsftale:

Template letter of institutional commitment:

- On headed paper of the Institution or of the Doctoral School
- Beyond any additional information that the participating organisation wishes to indicate in its Letter of pre-agreement, the following text should appear in all its parts and with no modifications:

I undersigned¹⁰, in my quality of¹¹, commit to set up all necessary provisions to award a joint/double/multiple¹² research doctoral degree in the frame of the DN-JD proposal¹³ submitted within the call HORIZON-MSCA-DN-2021, should the proposal be funded.

I am aware of and agree with the principle that the setting up of such provisions is a precondition for funding.

The research doctoral degree will be awarded to those Marie Sklodowska-Curie researchers who will fulfil, at the end of their research work, the requirements as set out in the formal agreement to establish the joint/double/multiple research doctoral degree between the relevant participating organisations.

[Free field for any additional information that the participating organisation wishes to indicate]

I am aware that the formal agreement to establish the joint/double/multiple research doctoral degree is due by month 6 from the start date of the project and I commit to comply with this deadline.

I hereby declare that I am entitled to commit into this process the Institution/Doctoral School I represent.

Tre typer netværk

Generelle netværk – op til 360 personmåneder

= 10 forskere

Industrial- eller Joint Network – op til 540 personmåneder

= 15 forskere

Deltagelsesregler – Ph.d.er

- Nationalitet – deltagelse af **alle nationaliteter**, men...
- **Mobilitetsreglen**: kandidaten må ikke have boet eller udført deres hovedbeskæftigelse (arbejde, studier, etc.) i værtsorganisationens land i **mere end 12 måneder indenfor de seneste 36 måneder** inden ansættelsestidspunktet.
- De rekrutterede skal være ph.d.-studerende, altså **endnu ikke være i besiddelse af en ph.d.-grad**, den dato de bliver ansat.

Deltagelsesregler – Ph.d.er

- **Indskrives** i en ph.d.-uddannelse, som **fører til en ph.d.-grad** i ML/AL. For **Joint Doctorates** skal det være **i mindst to lande**.
- **Udstationeringer** er støtteberettigede i **op til en tredjedel** af ansættelsesperioden. Også til tredjelande.
- **Industrial doctorates**, de ph.d.-studerende skal tilbringe **mindst 50%** af deres tid i den **ikke-akademiske sektor**.

Ansøgning og evaluering

30 sider + bilag

Alle tre typer bliver evalueret under **ét af 8 paneler**.

Fokus på **kvaliteten af vejledningen**.

Begrænsning af genansøgning kan finde anvendelse – en ansøgning med en score lavere end 80% bør ikke genansøge det efterfølgende år. Begyndende fra 2022.



Evalueringsskriterier

Excellence	Impact	Quality and efficiency of the implementation
Quality and pertinence of the project's research and innovation objectives (and the extent to which they are ambitious, and go beyond the state of the art)	Contribution to structuring doctoral training at the European level and to strengthening European innovation capacity, including the potential for: <ul style="list-style-type: none"> a) meaningful contribution of the non-academic sector to the doctoral training, as appropriate to the implementation mode and research field b) developing sustainable elements of doctoral programmes 	Quality and effectiveness of the work plan, assessment of risks and appropriateness of the effort assigned to work packages
Soundness of the proposed methodology (including interdisciplinary approaches, consideration of the gender dimension and other diversity aspects if relevant for the research project, and the quality and appropriateness of open science practices)	Suitability and quality of the measures to maximise expected outcomes and impacts, as set out in the dissemination and exploitation plan, including communication activities	Quality, capacity and role of each participant, including hosting arrangements and extent to which the consortium as a whole brings together the necessary expertise
Quality and credibility of the training programme (including transferable skills, inter/multidisciplinary, inter-sectoral and gender as well as other diversity aspects)	Credibility of the measures to enhance the career perspectives and employability of researchers and contribution to their skills development	
Quality of the supervision (including mandatory joint supervision for industrial and joint doctorate projects)	The magnitude and importance of the project's contribution to the expected scientific, societal and economic impacts	
50%	30%	20%
Weighting		



Postdoctoral Fellowships

Call 2021

Åbner: 18. maj 2021

Deadline: 15. september 2021

Budget: 242 mio. euro

Marie S. Curie Postdoctoral Fellowships er en mulighed for erfarne forskere, som ønsker at styrke deres karriere gennem arbejde i et andet land.

- Ny læring, et styrket CV og en stærkere international profil -

To typer fellowships

European Fellowships (EF)

Mobilitet indenfor eller til
europa

Global Fellowships (GF)

1. Mobilitet fra europa til
uden for europa
efterfulgt af
2. Mobilitet tilbage til
europa



Støtte til alle forskningsområder, inkl. områder dækket af
EURATOM traktaten.

Projektperiode

- European Fellowships: 12-24 måneder
- Global Fellowships: 24-36 måneder
(12-24 uden for europa, 12 retur i EU medlemsland eller associeret land)

Muligt at tilføje 6 måneder i en ikke-akademisk organisation (placement).

Udstationeringer (secondments)

op til 1/3 af fellowships varighed kan bruges på udstationeringer



Krav til ansøgere

Erfarne forskere: skal være i besiddelse af en ph.d.-grad

- Defineret som succesfuldt forsvaret ph.d.-afhandling

Grænse for forskningserfaring:

Max 8 års fuldtidssvarende forskningserfaring efter tildeling af ph.d.-grad

Incitament for:

- career restart and reintegration



Mobilitetsreglen

Den ansøgende forsker må ikke have boet eller udført sin primære aktivitet* i værtsorganisationens land i mere end 12 måneder ud af de 36 måneder direkte før ansøgningsfristen.

For Global Fellowships gælder det, at det er værtsorganisationen for den udgående fase af fellowships

**Primære aktivitet: arbejde, studier mm.*



Støttebeløb

En landekorrrektionskoefficient på 132% anvendes på "living allowance" for DK

MSCA Postdoctoral Fellowships	Contributions for the recruited researcher per person-month					Institutional unit contributions per person-month	
	Living allowance	Mobility allowance	Family allowance (if applicable)	Long-term leave allowance (if applicable)	Special needs allowance (if applicable)	Research, training and networking contribution	Management and indirect contribution
	EUR 5 080	EUR 600	EUR 660	EUR 5 680 x % covered by the beneficiary	requested unit ⁵³ x (1/number of months)	EUR 1 000	EUR 650

Ansøgning og evaluering

Max. sideantal: 10 + bilag

Evalueres i 8 videnskabelige paneler

Hvert panel 2 ranking lists:

- European Fellowships
- Global Fellowships

Evalueringsskriterier

Excellence	Impact	Quality and efficiency of the implementation
Quality and pertinence of the project's research and innovation objectives (and the extent to which they are ambitious, and go beyond the state of the art)	Suitability and quality of the measures to maximise expected outcomes and impacts, as set out in the dissemination and exploitation plan, including communication activities	Quality and effectiveness of the work plan, assessment of risks and appropriateness of the effort assigned to work packages
Soundness of the proposed methodology (including interdisciplinary approaches, consideration of the gender dimension and other diversity aspects if relevant for the research project, and the quality and appropriateness of open science practices)	Credibility of the measures to enhance the career perspectives and employability of the researcher and contribution to his/her skills development	Quality and capacity of the host institutions and participating organisations, including hosting arrangements
Quality of the supervision, training and of the two-way transfer of knowledge between the researcher and the host	The magnitude and importance of the project's contribution to the expected scientific, societal and economic impacts	
Quality and appropriateness of the researcher's professional experience, competences and skills		
50%	30%	20%
Weighting		

Genansøgning

Begrænsning på genansøgning

- Ansøgninger som involverer den samme værtsorganisation* og forsker – og som får en score lavere end 70% - vil blive opfordret til ikke at søge det efterfølgende år.
 - o Gældende fra 2022

* for Global Fellowships inkluderer det også værtsorganisationen for the udgående fase





MSCA Staff Exchanges

SE-callet 2021

Åbner: 7. oktober 2021

Deadline: 9. marts 2022, 17.00

Budget: 72,5 mio. eur.

Udveksling af forsknings- og innovationspersonale.

Internationalt, intersektorielt, interdisciplinært.

Målsætning

Støtte gives til at **styrke og udvikle partnerskaber** gennem fælles forsknings- og innovationsprogrammer. Udviklingen skal ske gennem international og intersektoriel mobilitet baseret på to-vejs **udveksling af forsknings- og innovationsmedarbejdere.**



Et typisk Staff Exchanges projekt

Et **konsortie** af organisationer fra forskellige lande og sektorer.

Foreslår et **fælles udvekslingsprojekt**.

Baseret på et fælles, eksisterende eller kommende forskningsprojekt.

Personale, som **allerede er ansat i organisationerne**, kan sendes på udveksling i alt fra 1 måned til 12 måneder.

Deres **kompetencer og netværk** styrkes og de bringer ny viden med hjem.

Deltagelsesregler

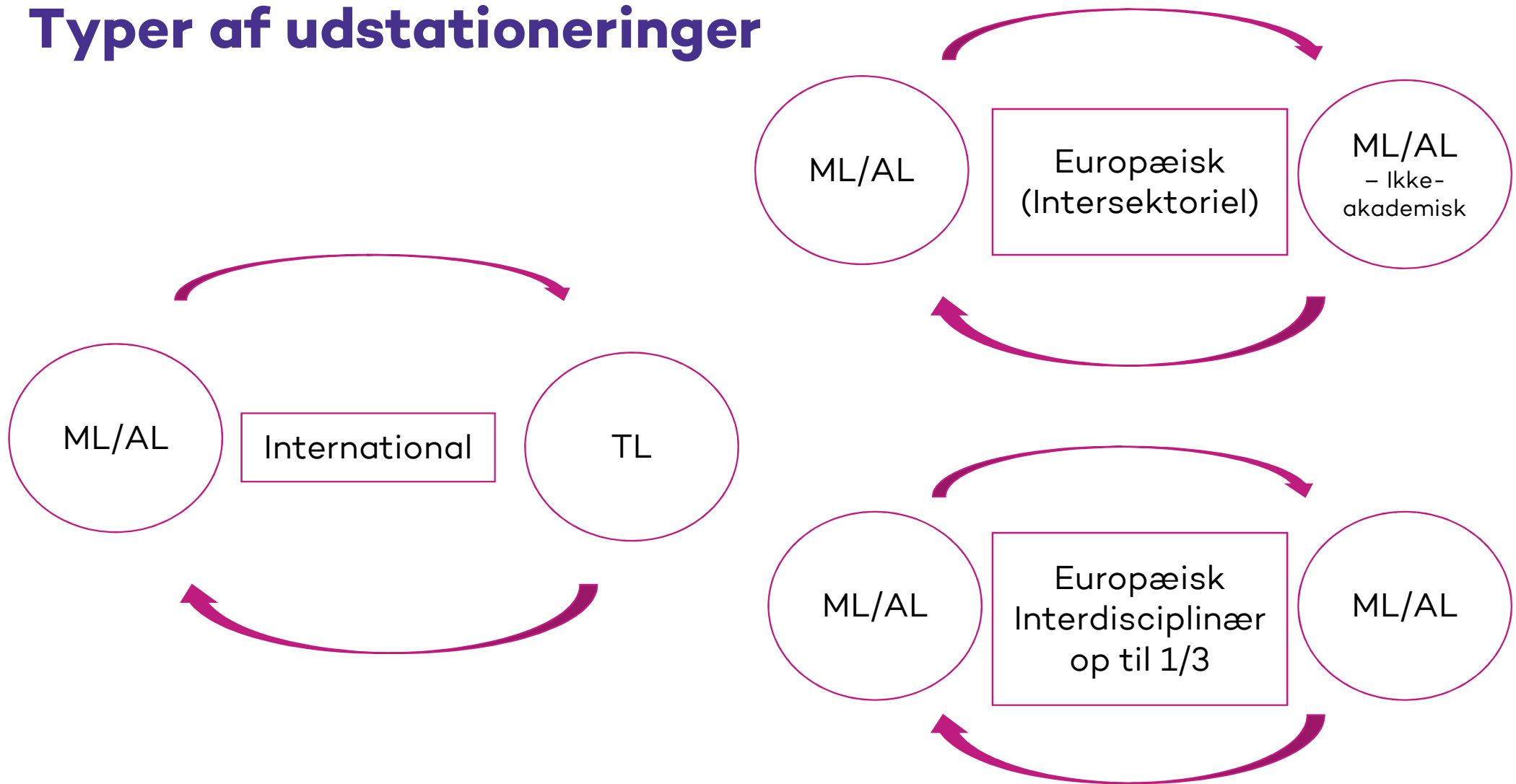
- Konsortie på min. 3 deltagere i 3 lande
 - Min. to lande skal være ML/AL
 - Kun deltagere i ML/AL kan være støttemodtagere
- Alle forskningsområder
- Alle nationaliteter
- Alle karrieretrin for forskere – fra ph.d. studerende til erfarne forskere
- Desuden øvrig personale: ledelse, teknisk, administrativt
- Projektet kan vare op til 48 måneder med maks. 360 måneders udstationering



Udstationeringerne

- Ophold: min. 1 måned – max. 12 måneder
- Medarbejderen skal have været ansat i 1 måned før udstationering
- Udstationeringen skal være til et andet land
- Efter udstationering skal medarbejderen reintegreres i egen organisation (dele viden og erfaringer)

Typer af udstationeringer



Støttebeløb

MSCA Staff Exchanges	Contributions for seconded staff members per person-month		Institutional contributions per person-month	
	Top-up allowance	Special needs allowance (if applicable)	Research, training and networking contribution	Management and indirect contribution
	EUR 2 300	requested unit ⁶¹ x (1/number of months)	EUR 1 300	EUR 1 000

Ansøgning og evaluering

30 sider + bilag

Alle tre typer bliver evalueret under **ét af 8 paneler.**

Fokus på **kvaliteten af vejledningen.**



Evalueringsskriterier

Excellence	Impact	Quality and efficiency of the implementation
Quality and pertinence of the research/innovation project (and the extent to which they are ambitious, and go beyond the state of the art)	Developing new and lasting research collaborations, achieving transfer of knowledge between participating organisations and contribution to improving research and innovation potential at the European and global level	Quality and effectiveness of the work plan, assessment of risks, and appropriateness of the effort assigned to work packages
Soundness of the proposed methodology (including international, interdisciplinary and inter-sectoral approaches, consideration of the gender dimension and other diversity aspects if relevant for the research project, and the quality and appropriateness of open science practices)	Suitability and quality of the measures to maximise expected outcomes and impacts, as set out in the dissemination and exploitation plan, including communication activities	Quality, capacity and role of each participant, including hosting arrangements and extent to which the consortium as a whole brings together the necessary expertise
Quality of the proposed interaction between the participating organisations and of the foreseen deliverables in light of the research and innovation objectives.	Credibility of the measures to enhance the career perspectives of staff members and contribution to their skills development	
	The magnitude and importance of the project's contribution to the expected scientific, societal and economic impacts.	
50%	30%	20%
Weighting		



Call 2021

Åbner: 12. oktober 2021

Deadline: 10. februar 2022

Budget: 89 mio. euro

Økonomisk støtte til organisationers egne forskeruddannelser og karriereudviklingsprogrammer via medfinansiering af regionale, nationale og internationale programmer.

Midlerne kan gå til nye eller eksisterende uddannelser for ph.d.-kandidater samt stipendieprogrammer for erfarne forskere.

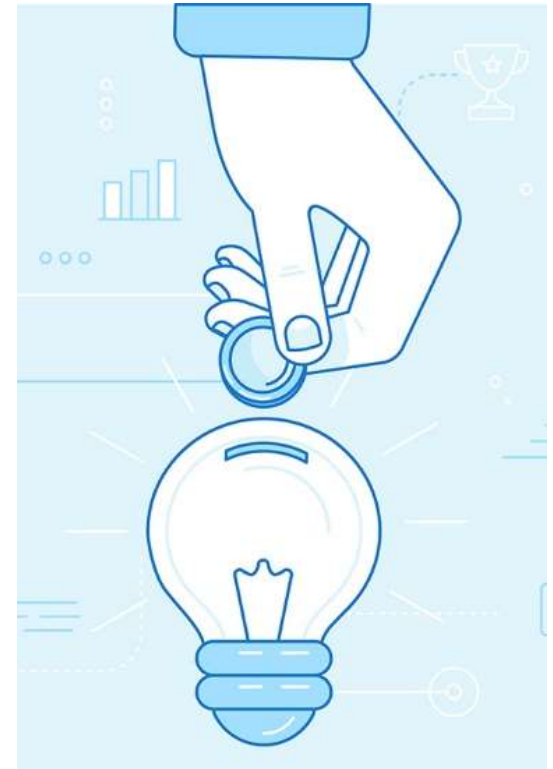
Hvad kan der søges støtte til?

To typer COFUND-projekter

- Doctoral Programmes – for forskere, der endnu ikke har opnået en ph.d. grad. Skal indskrives på en ph.d.-uddannelse.
- Fellowship Programmes – for forskere, der ved ansættelsen hos værtsinstitutionen, er i besiddelse af en ph.d.-grad.

Projektperiode: normalt 60 måneder

Max 10 mio. euro per støttemodtager per call



Hvem kan søge?

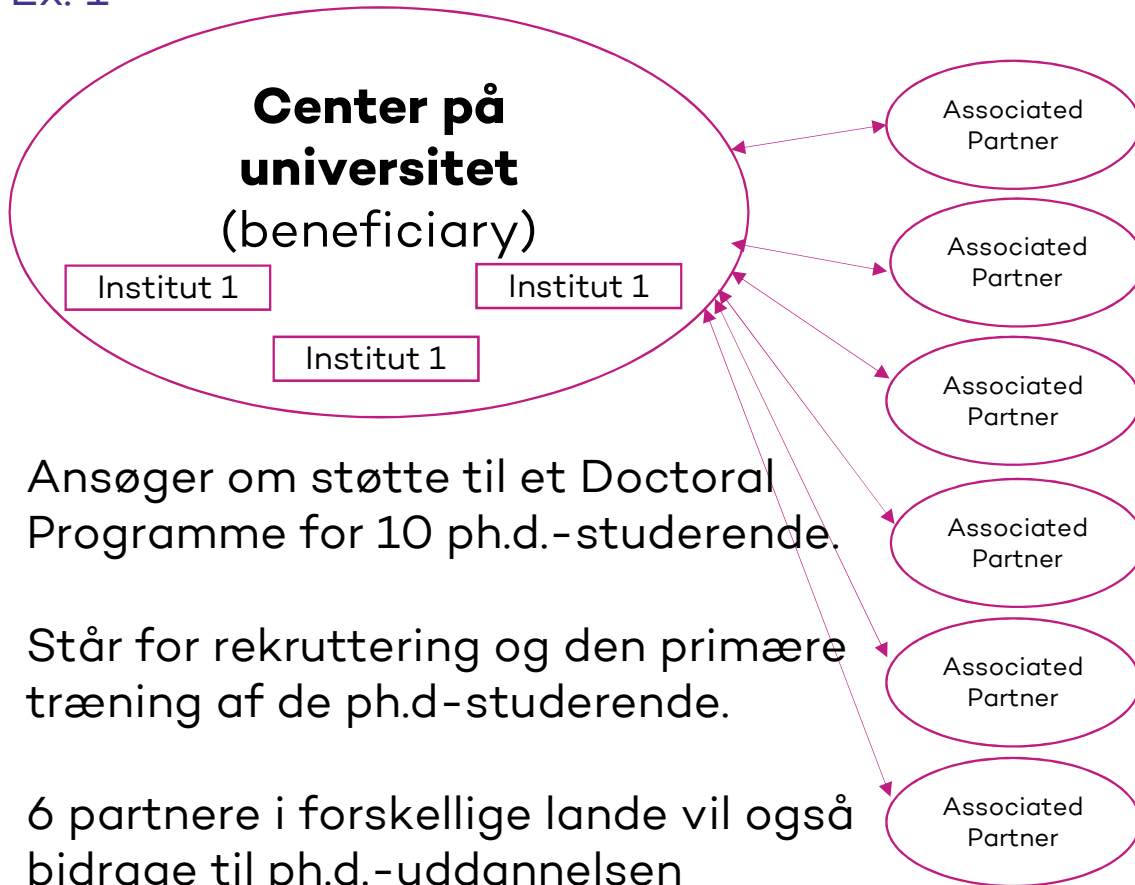
Organisationer, der finansierer eller administrerer ph.d.-uddannelser eller stipendier til forskere, eller som rekrutterer, er vært for og uddanner forskere.

- Kun én støttemodtager (beneficiary).
- Kan tilknytte 'Implementing partners', som forpligter sig til at rekruttere, uddanne og evt. medfinansiere forskere under projektet.
- Støttemodtager skal være etableret i et EU-medlemsland eller associeret land.



Et typisk COFUND-projekt

Ex. 1

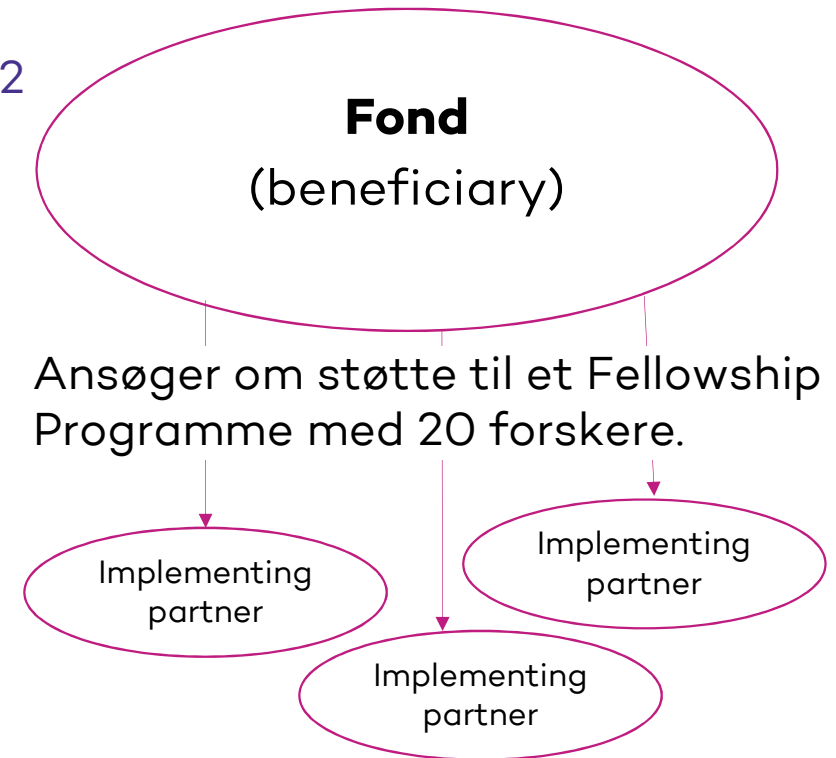


Ansøger om støtte til et Doctoral Programme for 10 ph.d.-studerende.

Står for rekruttering og den primære træning af de ph.d.-studerende.

6 partnere i forskellige lande vil også bidrage til ph.d.-uddannelsen (secondments og træning)

Ex. 2



Har tilknyttet 3 'Implementing partners' (universiteter), som vil stå for rekruttering og gennemførelsen af træning af forskerne.

Ansættelse af forskere

Alle nationaliteter kan søge.

Der skal rekrutteres minimum 3 forskere til projektet.

Mobilitetsreglen

Forskeren må ikke have boet eller udført sin primære aktivitet (arbejde, studier etc.) i værtsorganisationens land i mere end 12 af de 36 forudgående måneder inden deadline for ansøgning i opslag i COFUND projektet.



Støttebeløb

MSCA COFUND	Contributions for recruited researchers and institutional contributions per person-month			
	COFUND allowance		Long-term leave allowance (if applicable)	Special needs allowance (if applicable)
	Doctoral programmes	EUR 2 800	EUR 2 800 x % covered by the beneficiary	requested unit ⁶⁶ x (1/number of months)
	Postdoctoral programmes	EUR 3 980	EUR 3 980 x % covered by the beneficiary	

Ansøgning og evaluering

Max. sideantal: 30 + bilag

To evalueringspaneler:

- Doctoral Programmes
- Postdoctoral Programmes

Men en samlet rankingliste.



Evalueringsskriterier

- Ansøgningen ikke er den typiske forskningsansøgning om ekstern finansiering til et forskningsprojekt.
 - Det er en ansøgning om et forskeruddannelsesprogram.
- Mange af evalueringsskriterierne er mere administrative end faglige.
- Fokus på 'novelty'.

Excellence	Impact	Quality and efficiency of the implementation
Quality and novelty of the selection / recruitment process for the researchers (transparency, composition and organisation of selection committees, evaluation criteria, equal opportunities, the gender dimension and other diversity aspects) and quality and attractiveness of the appointment conditions, including competitiveness of the salary for the standards of the hosting countries		Quality and effectiveness of the work plan, management structures, assessment of risks and appropriateness of the effort assigned to work packages
Quality and novelty of the research options offered by the programme in terms of science, interdisciplinarity, inter-sectorality and level of transnational mobility. Quality and appropriateness of open science practices	Strengthening human resources good practices at institutional, regional, national or international level, in particular through aligning the practices of participating organisations with the principles set out by the EU for human resources development in research and innovation	Quality and capacity of the host institution(s) and participating organisations (where appropriate), including hosting arrangements and extent to which they bring together the necessary expertise to successfully implement the research training programme
Quality, novelty and pertinence of the research training programme (including transferable skills, inter/multidisciplinary, inter-sectoral and gender as well as other diversity aspects)	Suitability and quality of the measures to maximise the expected outcomes and impacts, as set out in the dissemination and exploitation plan, including communication activities	
Quality, novelty and pertinence of the supervision, career guidance and career development arrangements	Credibility of the proposed measures to enhance the career perspectives and employability of researchers and contribution to their skills development	
50%	30%	20%
Weighting		



Opportunities at AIAS

- [AIAS Fellowships](#)
- [AIAS Associates](#)
- [Synergies with Aarhus University](#)

AIAS-COFUND Fellowships



THE 2021-2022 CALL BELOW HAS NOW CLOSED, AND THE REVIEW AND SELECTION PROCESS IS NOW IN PROCESS (DATE: 15 JANUARY 2021).

AIAS-COFUND II Marie Skłodowska-Curie Fellowships 2021-2022

Up to 15 AIAS-COFUND fellowships are available for the most talented researchers from around the world and within all research disciplines and topics. The scheme is funded by the European Union's Horizon 2020 Research and Innovation Programme under the Marie Skłodowska-Curie actions (grant agreement no 754513) and Aarhus University Research Foundation.

Two types of AIAS-COFUND II Fellowships

- **AIAS-COFUND Junior Fellowships** for postdoctoral researchers with a career experience of 2-10 years. Duration from 12-36 months.
- **AIAS-COFUND Senior Fellowships** for researchers with a career experience of 10+ years. Duration from 6-18 months.

Who can apply?

The target group of the Programme is talented researchers at all career stages with a PhD and a minimum of two years of full-time postdoctoral research experience at the time of the application deadline. Applicants must comply with a mobility demand:

- Applicants must not have resided or carried out their main activities (work etc.) for more than 12 months in Denmark in the 3 years immediately prior to the call deadline. Time spent as part of a procedure for obtaining refugee status under the Geneva Convention, compulsory national service and/or short stays such as holidays are not taken into account.

Why apply?

AIAS hosts curiosity-driven and independent research for excellent scholars from all disciplines and focuses exclusively on research excellence and training of research talent. A fellowship at AIAS offers researchers a unique opportunity to pursue their own research project and to collaborate with the research environments at Aarhus University and the inspiring international and multidisciplinary community at AIAS, which is located within the Aarhus University campus.

The AIAS-COFUND II Programme is for both junior and senior researchers who are seeking to enhance their understanding of methodologies and approaches of their own and other scientific disciplines and to explore these approaches, thus making cross-disciplinary



Application process and deadline

- Opening of call: 13 November 2020.
- **Deadline for applications: Friday, 15 January 2021 at 12.00 (noon) CET.**
- Evaluation period: February-May 2021.
- Applicants will receive answers: June 2021.
- Fellowship periods will commence: 1 October 2021 or 1 February 2022.

Guide for Applicants

FAQ

Selection

QA Group and Selection Committee

Contact



MSCA and Citizens



Call 2022

Åbner: 17. juni 2021

Deadline: 7. oktober 2021

Budget: 14 mio. euro

Støtter projekter, der tager del i det europæiske initiativ European Researchers' Night, hvor forskning og forskere promoveres.

Målet er at bringe forskere tættere på offentligheden, øge borgeres bevidsthed om forskningens betydning og øge anerkendelsen af forskere. Desuden opmuntre unge til at søge en forskerkarriere.

Hvem kan søge?

- Universiteter, forskningsinstitutioner, forskningsinfrastrukturer og virksomheder fra EU-medlemslande eller associerede lande.
- Enkelt-ansøger eller konsortium med 2 eller flere partnere.
- Særlig fokus på, at virksomheder, især små- og mellemstore virksomheder (SMV'er), deltager.

Hvad kan der søges støtte til?

Udgifter ifm. tilrettelæggelsen af et eller flere forskningsformidlingsarrangementer (før, under og efter).

Typisk støttede aktiviteter:

- videnskabsshows med offentlig deltagelse
- debatter
- live Q&A med forskere
- konkurrencer
- workshops
- guidede besøg til ex. laboratorier



Projektperiode

Oftest to år - dækkende to udgaver af European Researchers' Night.

Støttebeløb

Afhænger af omfanget af aktiviteter. Europa-Kommissionen anslår at ansøgninger på mellem 50.000 og 150.000 euro vil kunne dække et års afholdelse af European Researchers' Night .

EU-støtten tildeles som lump sum.



Ansøgning og evaluering

Max. sideantal: 30 + bilag

Evalueringskriterier

	Excellence	Impact	Quality and efficiency of the implementation
Coordination and Support Actions (CSA)	<ul style="list-style-type: none">- Clarity and pertinence of the project's objectives.- Quality of the proposed coordination and/or support measures, including soundness of methodology.	<ul style="list-style-type: none">- Credibility of the pathways to achieve the expected outcomes and impacts specified in the work programme, and the likely scale and significance of the contributions from the project.- Suitability and quality of the measures to maximise expected outcomes and impacts, as set out in the dissemination and exploitation plan, including communication activities.	<ul style="list-style-type: none">- Quality and effectiveness of the work plan, assessment of risks, and appropriateness of the effort assigned to work packages, and the resources overall.- Capacity and role of each participant, and the extent to which the consortium as a whole brings together the necessary expertise.

Andre calls i arbejdsprogrammet

Coordination and Support Actions (CSA)

- NCP network
- International Cooperation
- Researchers at Risk

Procurements

- Alumneforening - <https://www.mariecuriealumni.eu/groups/danish-chapter>
- Studie i mobilitetsflows
- Researchers at Schools
- Øget MSCA synlighed

Styrelsens Horizon Europe Kickoff konference – MSCA-session d. 26.11.2020, 13.15 – 14.00

Beskrivelse af sessionen

Marie Skłodowska-Curie Actions [MSCA] yder støtte til international forskeruddannelse, forskermobilitet og karriereudvikling. Danmark har været god til at benytte denne mulighed i Horizon 2020. I denne session fortæller tre MSCA-deltagere fra Københavns Universitet, Lægemedelstyrelsen og Københavns Professionshøjskole om deres erfaringer med deltagelse i Horizon 2020 MSCA-projekter. Sessionen byder på korte præsentationer fra de tre talere og en afsluttende paneldebat, der giver inspiration til fremtidige deltagelse i MSCA i Horizon Europe.

Beskrivelse af talere



Marie Louise Nosch

Professor ved Københavns
Universitet, foto: Lars Svankjær

[Læs mere](#)



Niels Henrik Meedom

Fundraiser for
Lægemedelstyrelsen

[Læs mere](#)



Lars Holm Rasmussen

Docent ved Københavns
Professionshøjskole

[Læs mere](#)

www.eukickoff.dk

Nyttige links

Online information event den 23/3 kl. 9-12:30:

https://ec.europa.eu/research/mariecurieactions/events/msca-under-horizon-europe-information-event_en

Funding and Tenders Portal

<https://ec.europa.eu/info/funding-tenders/opportunities/portal/screen/home>

Europa-Kommissionens side om MSCA

https://ec.europa.eu/research/mariecurieactions/msca-actions_en

Uddannelses- og Forskningsstyrelsens sider om Horizon Europe

www.ufm.dk/horizon-eu

NCP Netværksprojekt (FAQ, guides, tips og tricks etc.)

<https://www.net4mobilityplus.eu/>

Tak for jeres opmærksomhed!
Tid til spørgsmål!



