

Install Kaltura Capture

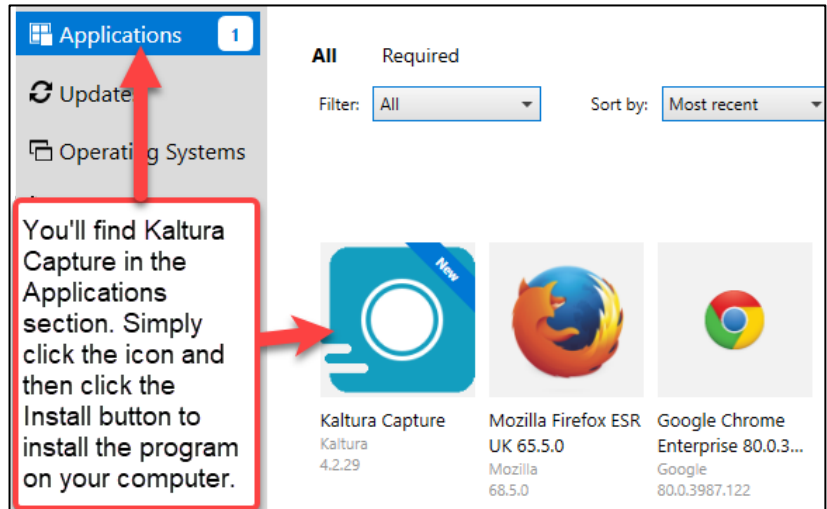
First install Kaltura Capture on your computer either via the Software Center or the Mymedia tab in itslearning. See the instructions below.

Important note for Linux users:

Note that Kaltura Capture does not work on Linux computers. Linux users are recommended to use the program [recordMyDesktop](#) instead. You can then upload your videos to Mymedia in itslearning. See the guide in section 5 How to upload videos to the Mymedia tab on p. **Fejl! Bogmærke er ikke defineret..**

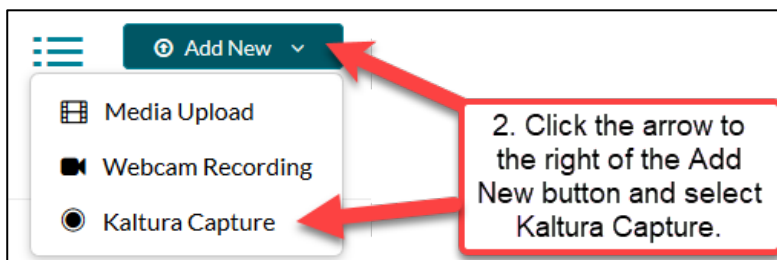
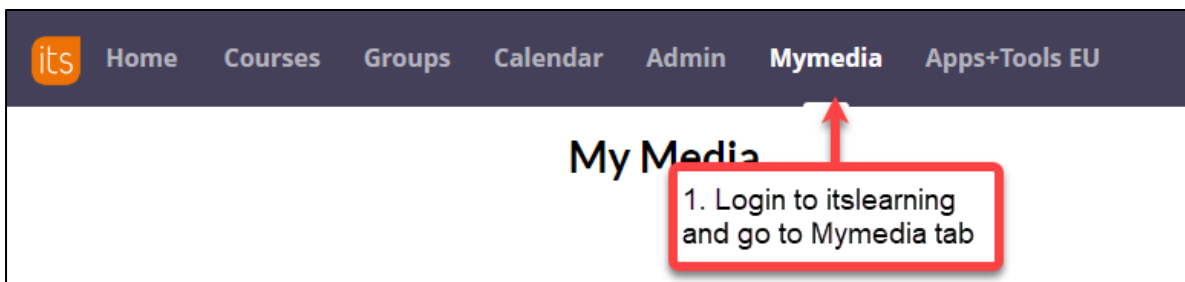
1. Install via Software Center

If you have an SDU computer, you can install Kaltura Capture from the Software Center. Open the Software Center:



2. Install via itslearning and the Mymedia tab

If you do not have an SDU computer and/or if you have permission to install programs on your computer, you can install Kaltura Capture via the Mymedia tab in itslearning:



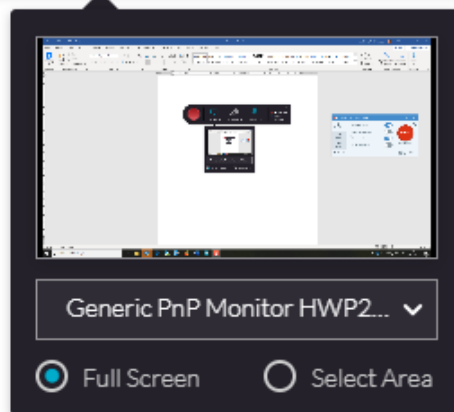
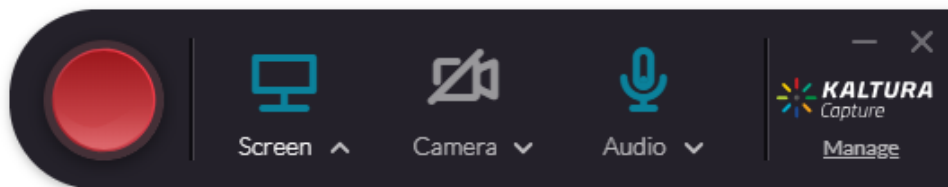


The Kaltura Capture Desktop Recorder

If you've already installed Kaltura Capture, it

3. Install Kaltura Capture via the relevant link.

Using Kaltura Capture for the first time?



4. When Kaltura Capture has been installed, you'll see the program on your screen.