

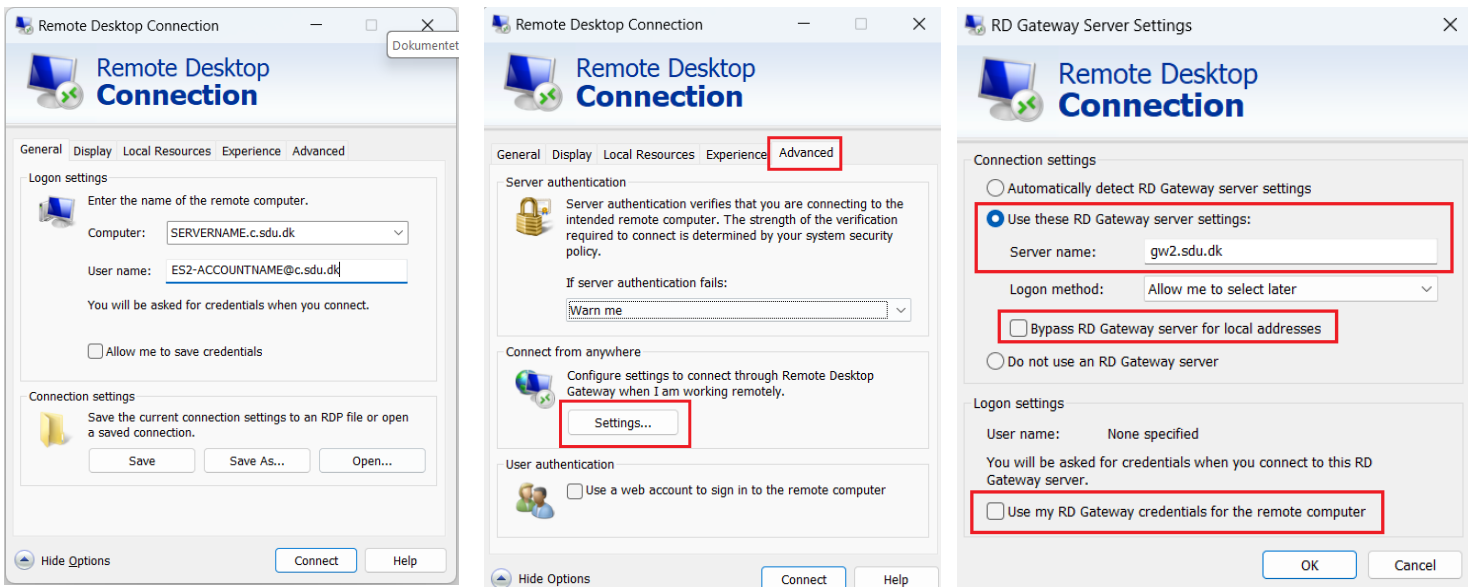
Remote Desktop Connection to Tier 2 servers

It is necessary that MFA is set up and the Microsoft Authenticator App installed on your mobile phone and chosen as most advisable Sign-in method. See aka.ms/mfasetup Sign-in method when most advisable is unavailable **Microsoft Authenticator**
You must be connected to SDU via VPN to access SDU resources.

Setting up Remote Desktop Connection :

On the *General* tab, enter *Computer name* and *User name* with the account you use for server login.

Under *Settings* on the *Advanced* tab, enter the *Gateway Server name* and other settings as shown. Then OK and connect.



Fill in the credentials for the Gateway server with the *standard user account*, open the Authenticator App on the Mobile Phone and authorize. Then enter the credentials for the server with the server account.

