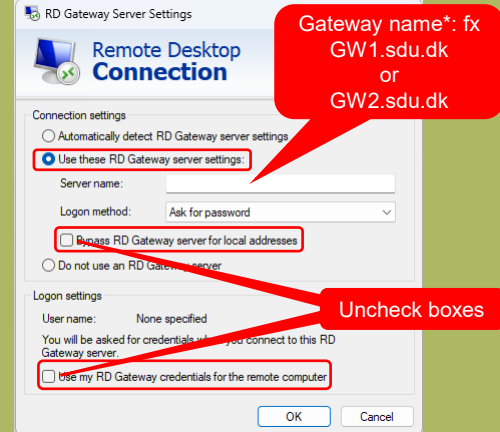
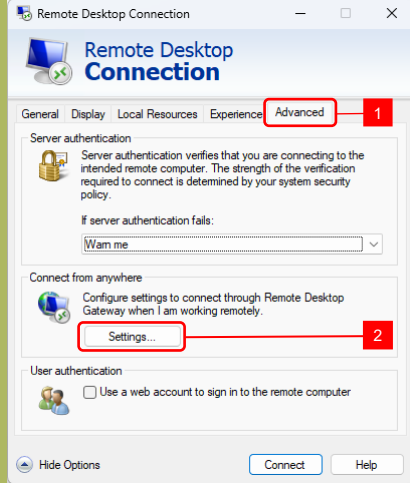
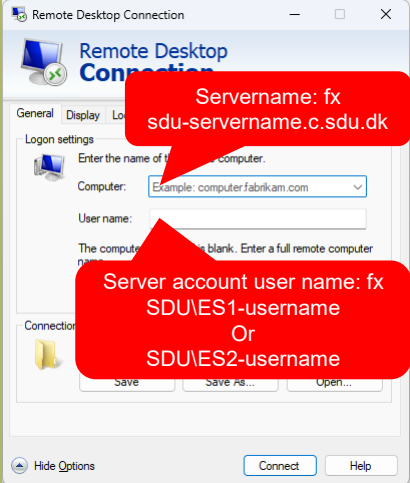


Remote desktop to SDU servers

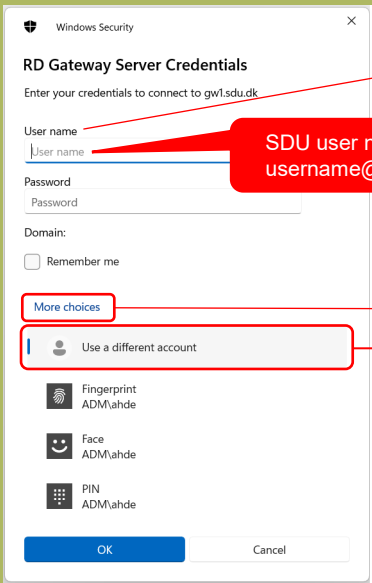
Fill in as shown below, press OK in the settings window and press connect.



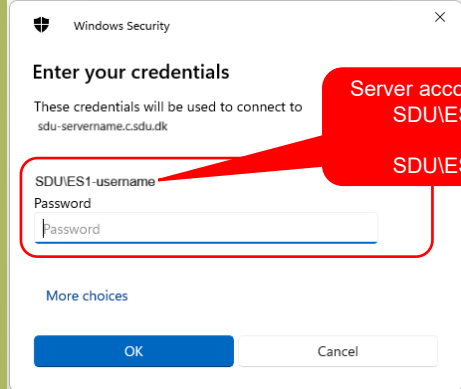
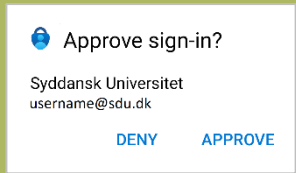
* find gateway name for your account in the table below

User account	Gateway name
WS0-username	GW0.sdu.dk
WS1-username	GW1.sdu.dk
IU1-username	
ES1-username	GW2.sdu.dk
WS2-username	
IU2-username	
ES2-username	GW3.sdu.dk
WS3-username	

Fill in Gateway credentials, press OK and approve on mobil phone Authenticator app. Then fill in the server credentials for the server account and press OK.



SDU user name: fx username@sdu.dk



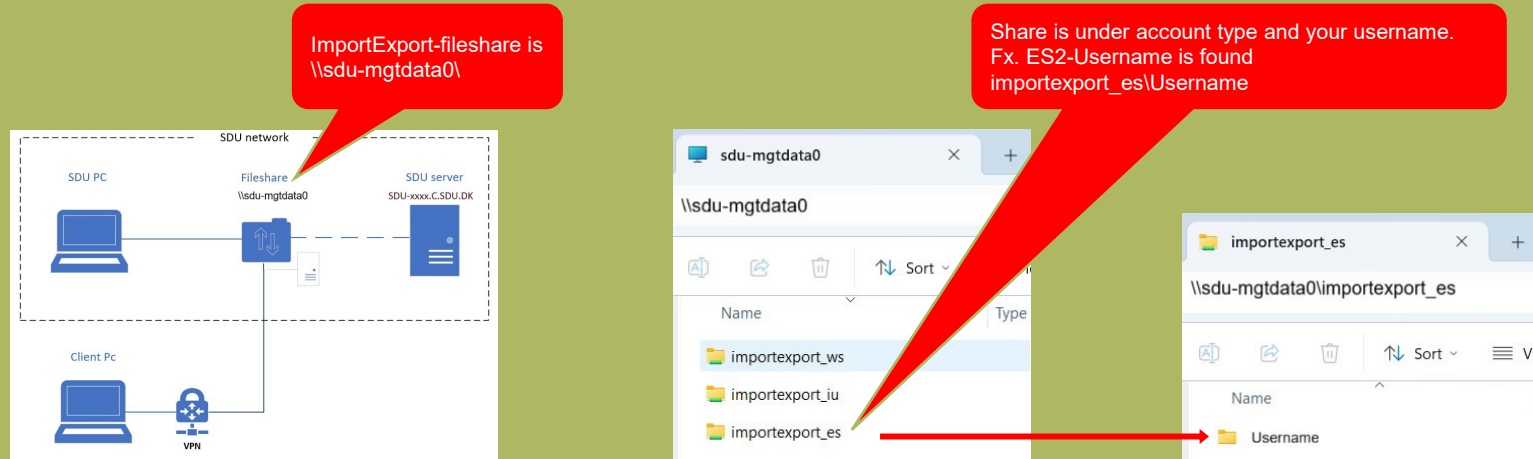
Note!
Only User name is allowed.
PIN, Fingerprint, Face and the "Remember me" option are not supported.

Note! (link til vejledning af mfa- og VPN-setup)
Microsoft Authenticator app on mobil phone required.
aka.ms/mfasetup

VPN connection to SDU is required to access resources

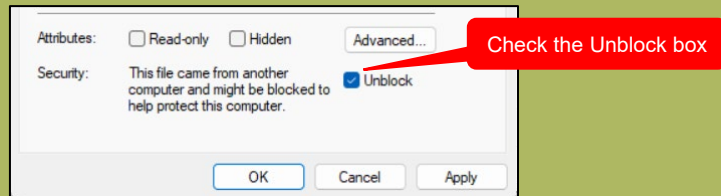


Filesharing with SDU servers



Method for importing files on SDU-server

1. Download on your PC
2. Copy to SDU-share from PC
3. Copy to SDU-server from SDU-share
4. Unblock file from properties



**!NB Share content is deleted every week.
Share is only intended for importing/exporting files**