

# Remote Desktop Connection to Tier 2 servers

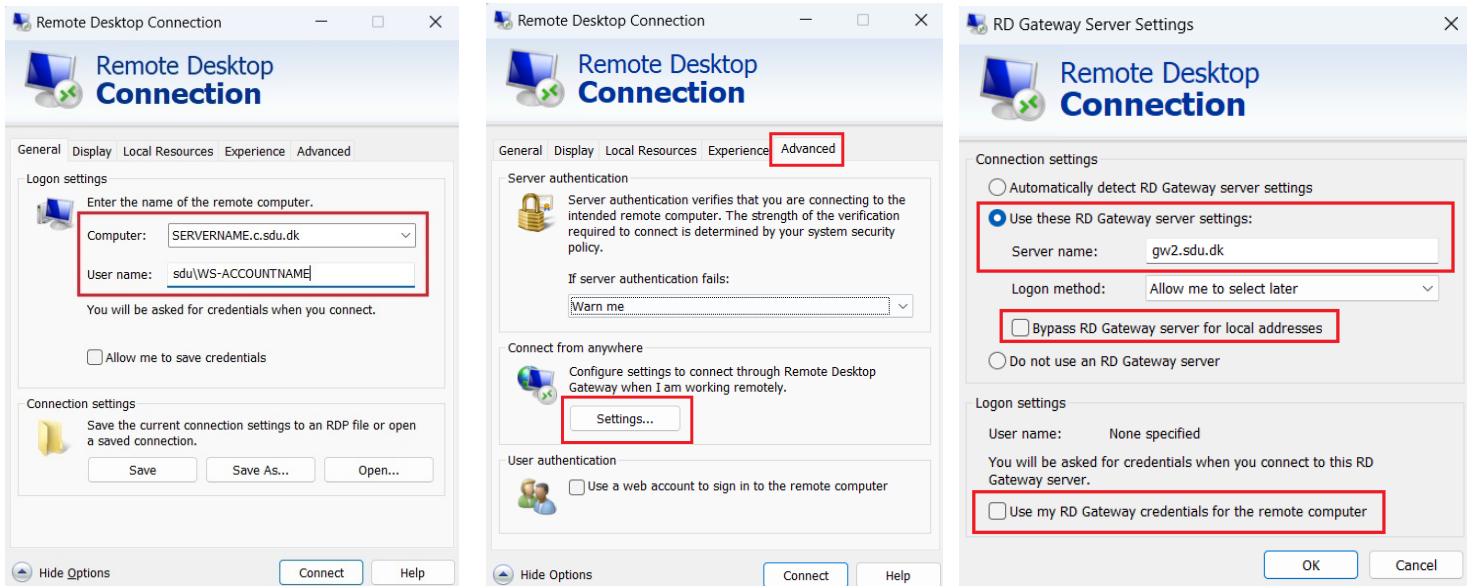
It is necessary that MFA is set up to your personal SDU account, and the Microsoft Authenticator App installed on your mobile phone and chosen as most advisable Sign-in method when most advisable is unavailable **Microsoft Authenticator**

*Mac Remote Desktop setup on page 2.*

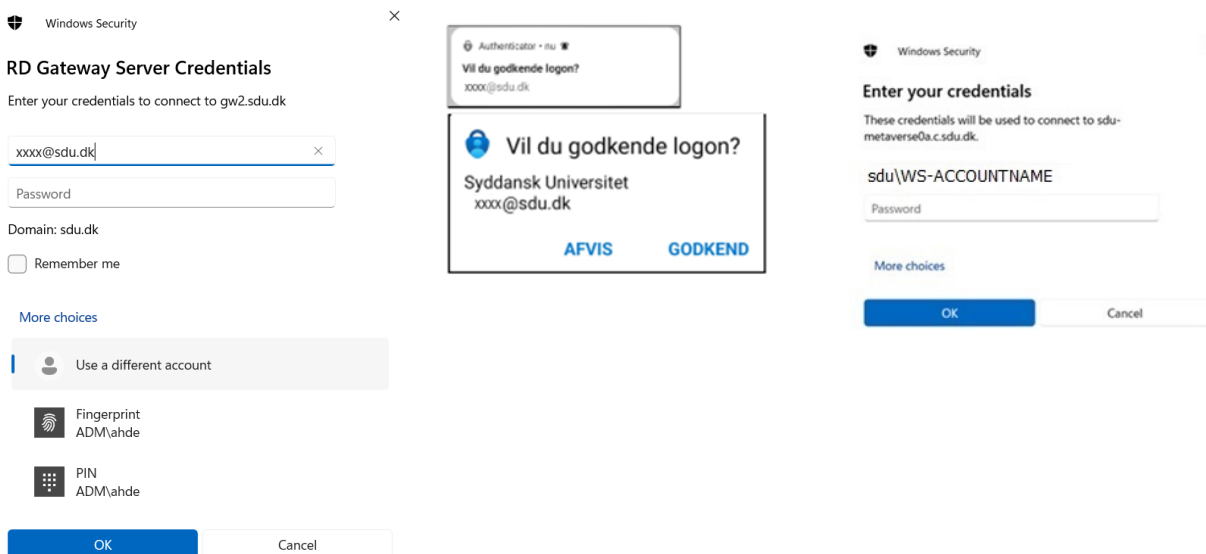
## Setting up Remote Desktop Connection PC :

On the *General* tab, enter *Computer name* and *User name* with the account you use for server login.

Under *Settings* on the *Advanced* tab, enter the *Gateway Server name* and other settings as shown. Then OK and connect.



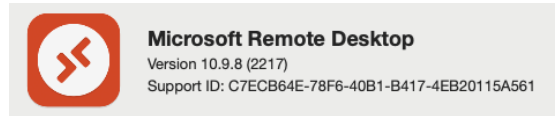
Fill in the credentials for the Gateway server with the standard user account, open the Authenticator App on the Mobile Phone and authorize. Then enter the credentials for the server with the server account.



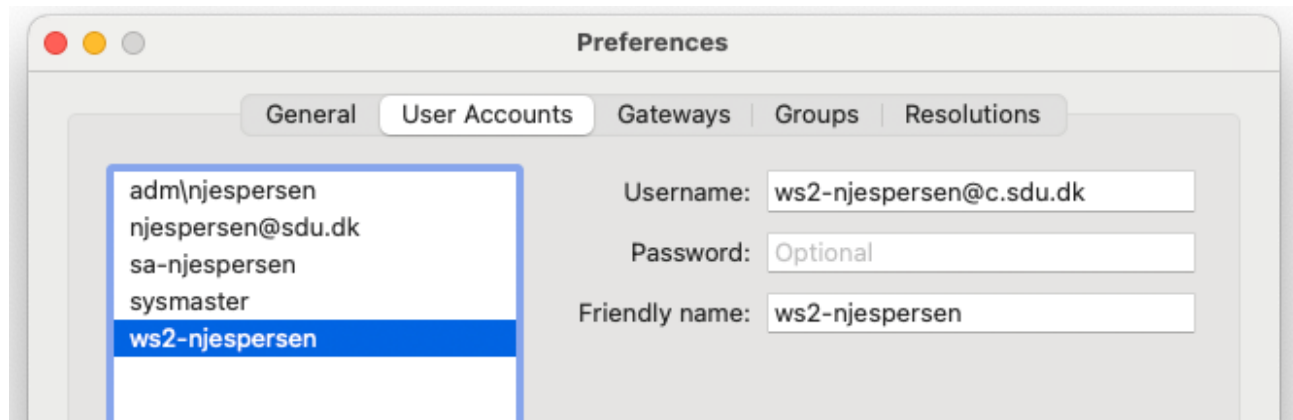
# Remote Desktop Connection to Tier 2 servers

## Mac Remote Desktop connections setup

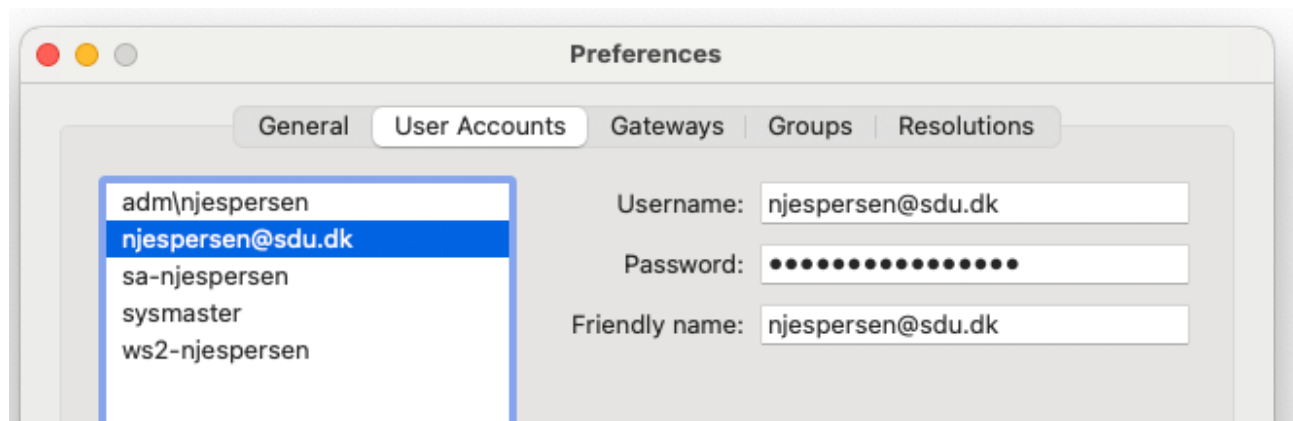
Download fra the Apple APP Store Microsoft Remote Desktop ver 10.x



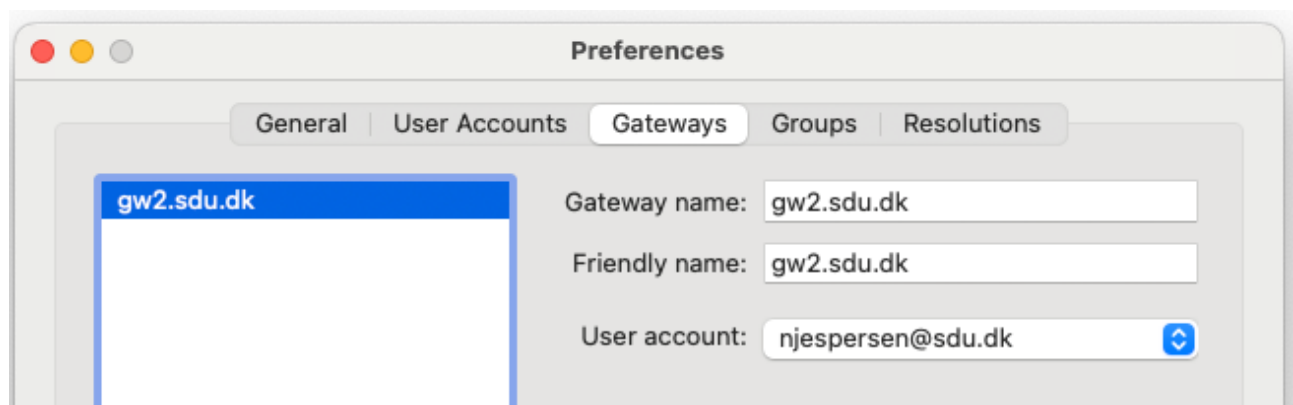
In Microsoft Remote Desktop -> Preference create a entry with your WS account, the account you use for server login. Important that you use @domain



In Microsoft Remote Desktop -> Preference create a entry with your SDU account



In Microsoft Remote Desktop -> Preference create a entry with the Gateway server name and with your personal SDU user account as User account.



# Remote Desktop Connection to Tier 2 servers

Create a connections setting as shown

**Edit PC**

PC name:

User account:

**General** | Display | Devices & Audio | Folders

Friendly name:

Group:

Gateway:

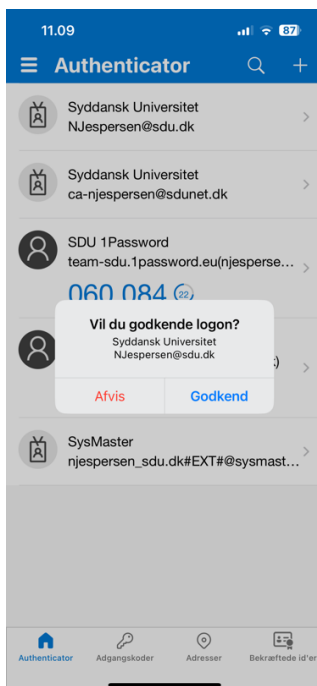
☐ Bypass for local addresses

☐ Reconnect if the connection is dropped

☐ Connect to an admin session

☐ Swap mouse buttons

When you connect then you should get at Microsoft Authentication Notification on your personal SDU account you should authenticate. Then enter the credentials for the server with the server account



**Enter Your User Account**

This user account will be used to connect to sdu-filemaker0a.c.sdu.dk (remote PC).

Username: ws2-njespersen@c.sdu.dk

Password:

☐ Show password

Friendly name: ws2-njespersen